



morton.

Darlinghurst 505/172 Riley Street

1 1

Ideally placed in the heart of Surry Hills, one of Sydney's most sought-after lifestyle communities. This inviting residence defines accessible city living without compromise. In a landmark security building, the welcoming warehouse interiors are designed with artistic style and comfort.

- Well designed interiors with an intuitive use of space
- An impressive investment or first home opportunity
- Sleek CaesarStone kitchen with stainless gas appliances
- Soaring ceilings, balcony, air con and huge storeroom
- Communal BBQ rooftop with opera house and bridge views
- Facilities include a heated lap pool, gym and sauna

View

As advertised or by appointment

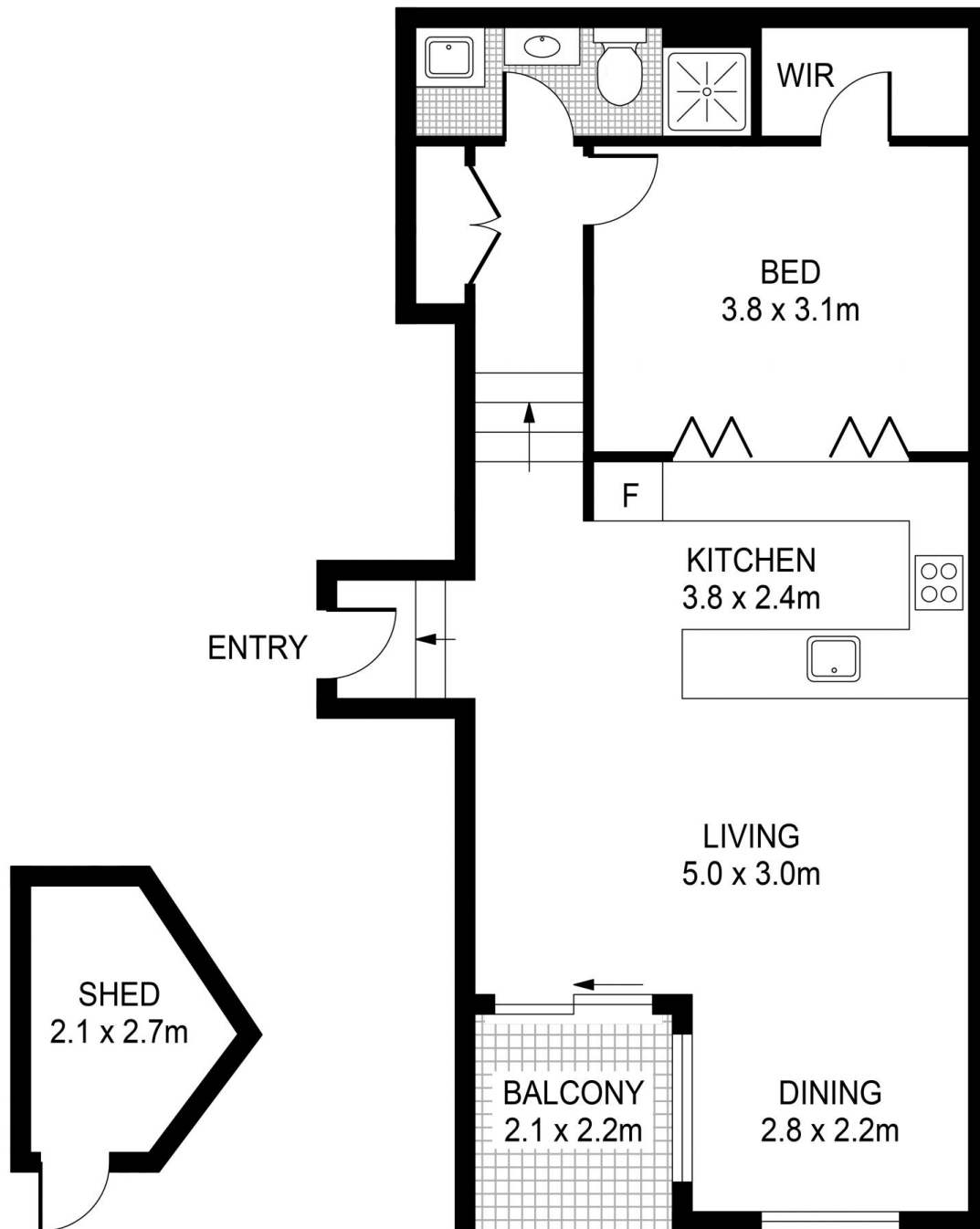
Agent

Ettiene West

0410 593 749

ettiene@morton.com.au

morton.com.au



505/172 Riley Street, Darlinghurst



Scale in metres. Indicative only. All information contained herein is obtained from sources we believe to be accurate. We cannot guarantee its accuracy. Interested persons should make and rely on their own enquiries