

# morton.

**Mosman** 2.07/116 Belmont Road

1 1 1

Holding deposit taken, all future inspections cancelled.

Designed by award winning architects 'Bates Smart', this elegant well-proportioned apartment makes the most of its north westerly position on the corner of the building. With a leafy outlook from the private balcony and quality finishes throughout.

- Prime corner positioning with northerly aspect
- Well-proportioned living area at the front filled with natural light
- Elegant kitchen with premium Miele appliances and gas cooking
- Calcutta marble counter tops and splashback
- Superior tapware feature throughout the bathroom
- Wide oak timber floors in living area, study nook
- Split system air-conditioning and ceiling fan
- Good size balcony with leafy outlook
- Secure car space and separate storage
- Extra parking and storage cage available to lease

## View

As advertised or by appointment

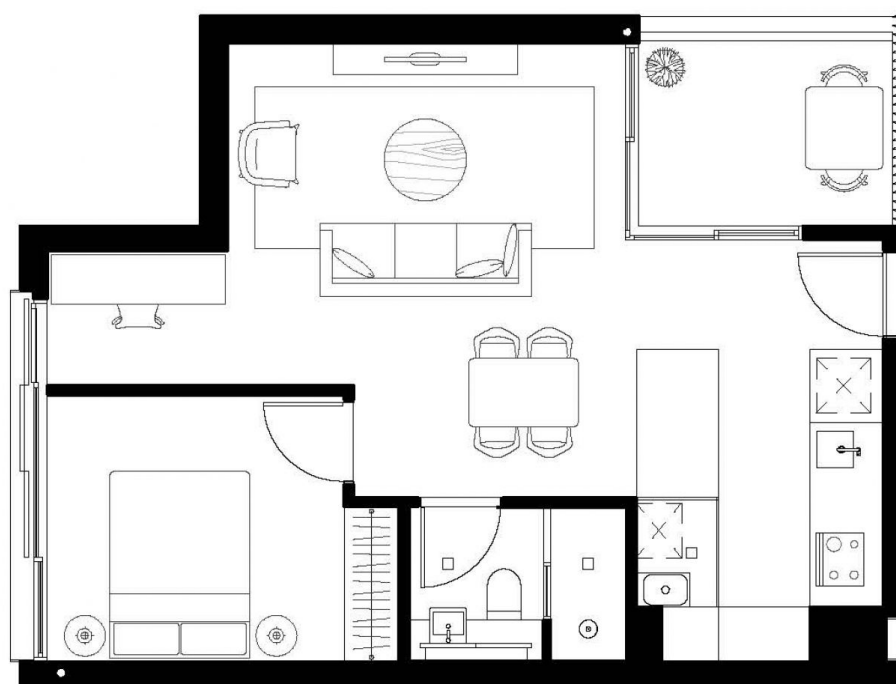
## Agent

**Sarah Fowell**

0437 492 129

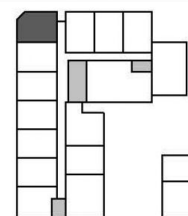
sarah@morton.com.au

**morton.com.au**



APARTMENT 2.07  
 LEVEL Level 02  
 TYPE 1BT03  
 UNIT AREA (sqm)  
 Internal 51 m<sup>2</sup>  
 Balcony 6 m<sup>2</sup>  
 Total 56 m<sup>2</sup>  
 Sheet Number A50.207 Revision [R]

Legend:  
 S- Storage



DISCLAIMER: Please note that the layout plan was produced prior to construction. The information is believed to be correct but is not guaranteed. Changes may be made during construction and dimensions, areas, fittings, finishes and specification are subject to change without notice in accordance with the provisions of the contract for sale. The furniture and furnishings depicted are not included with any sale and purchasers must refer to their contract for sale for the list of inclusions. The position of the furniture and furnishings should not be taken to be indicative of final positions of power points, tv connection points and the like. Prospective purchasers must rely on their own enquiries. All graphics including tile layout and balustrades and the like are indicative only. Bulkheads for services are not depicted.