



morton.

Pyrmont 28/1 Murray Street

🛏 3 🚿 2 🚗 2

View

As advertised or by appointment

Agent

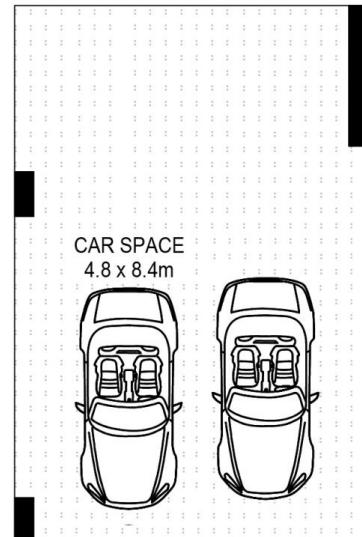
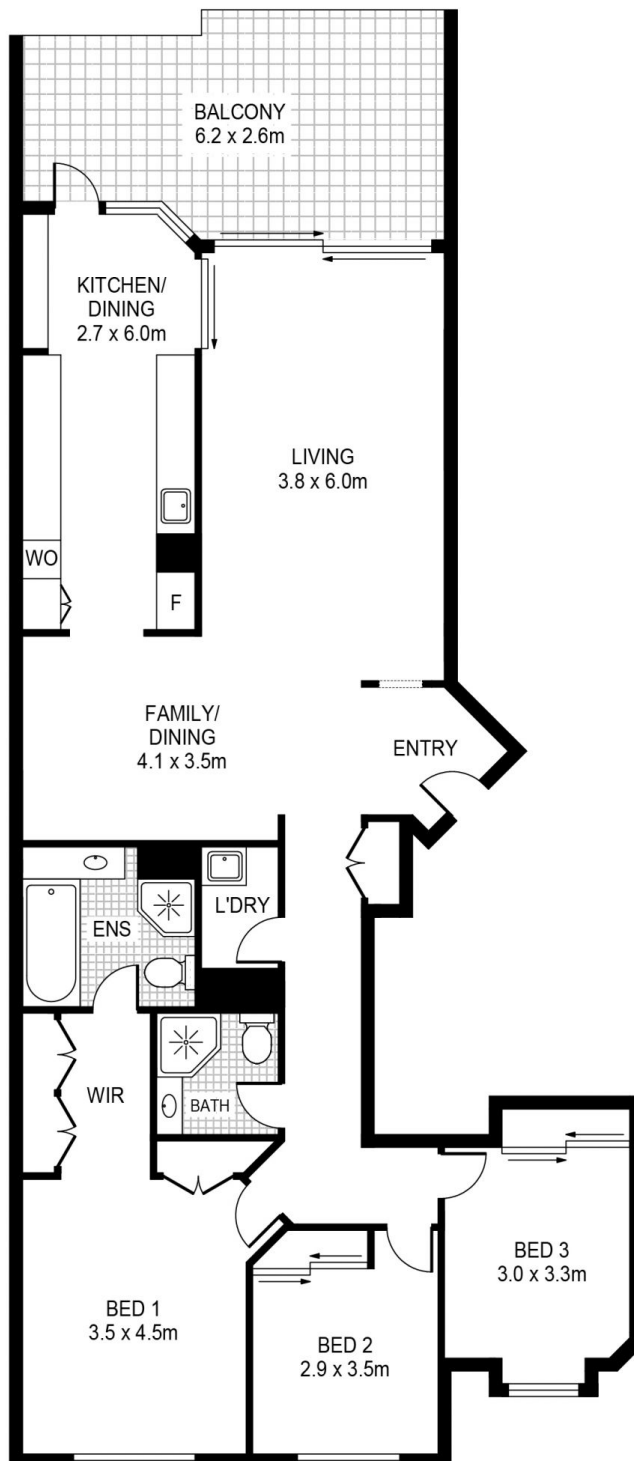
Morton

📞
✉ info@morton.com.au

Set in a private and exclusive position with only three apartments per floor, this apartment will delight tenants looking for high-end luxury and prime positioning. Residents also enjoy access to the onsite swimming pool and gym plus the tranquil central garden. Single level luxury defines this superb residence where designer style, space and mesmerizing views combine to create a stunning lifestyle apartment. Set in Mirvac's prestige Gateway complex, it offers a home of outstanding quality with spacious proportions and breathtaking harbour and city panoramas. This deluxe property showcases a flowing light-filled layout and enjoys a premier location on the doorstep of Darling Harbour, Star Casino, Barangaroo and Sydney's CBD.

- Prime north facing position with inspiring harbour and city views
- Luxury granite kitchen w/ Smeg appliances
- An expansive layout with over 135sqm indoor/outdoor living space
- Large walls of glass that maximise natural light and city

morton.com.au



PLANS SHOWN ONLY INDICATIVE OF LAYOUT. DIMENSIONS ARE APPROXIMATE.



PYRMONT 28/1 Murray St

morton.