



morton.

Waterloo 609/11A Lachlan Street

🛏 2 🚿 2 🚗 1

Embracing a sleek modern feel that makes the most of the size, light and elevated park outlooks, this stylish 'Alpha G' residence offers a superb living space that is private, secure and centrally located for lifestyle. It combines bright airy interiors, a stylish design and a generous floorplan to deliver an excellent low-maintenance home in a great city-fringe location.

- A light filled single level layout with a breezy open plan design
- Wide entertainment balcony with tranquil park outlook
- Two double bedrooms each feature generous built-in storage
- Renovated gas kitchen with breakfast island and Euro appliances
- Good sized main bathroom and ensuite with internal laundry
- Security basement car space, intercom entry and air conditioning
- Shared rooftop terrace that captures panoramic city vistas

View

As advertised or by appointment

Agents

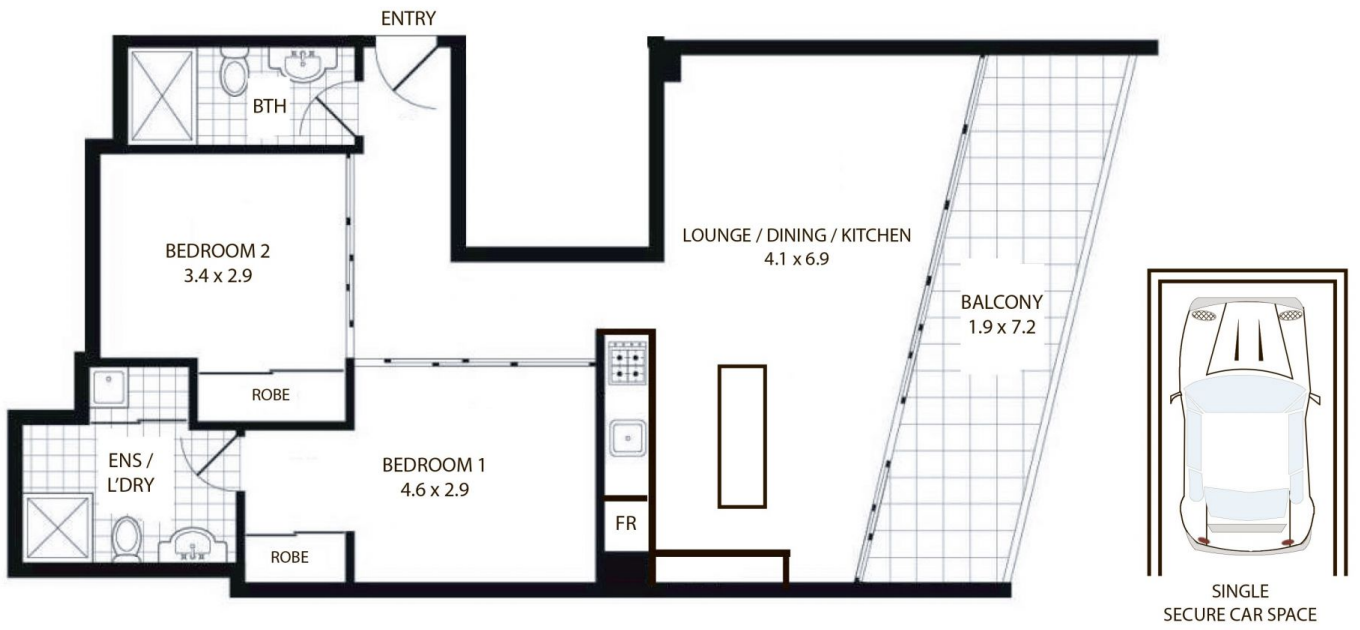
Sarah Fowell

📞 0437 492 129
✉ sarah@morton.com.au

Calvin Chan

📞 0406 888 028
✉ calvin@morton.com.au

morton.com.au



609/11A Lachlan St Waterloo

All measurements are approximate only. Plan is provided as an indication of layout

