



morton.

Zetland 102/13 Joynton Avenue

1 1

Offering a sleek designer home close to the heart of the city, this ultra-modern one-bedroom residence provides the ideal environment for easy low care living. It offers a very special property that embraces stylish urban living and sets a high standard of excellence in the Emerald Park development's premier resort community.

- A stunning complex with landscaped grounds, outdoor BBQ areas
- Resort style tropical lagoon pool, lap pool and Balinese spa
- Crisp and fresh interiors feature a light filled open plan design
- Covered balcony or wintergarden for outdoor entertaining
- Sleek stone kitchen with Euro gas appliances and dishwasher
- Good sized double bedroom, designer bathroom and internal laundry
- Residents access to a rooftop terrace with stunning panoramas

View

As advertised or by appointment

Agents

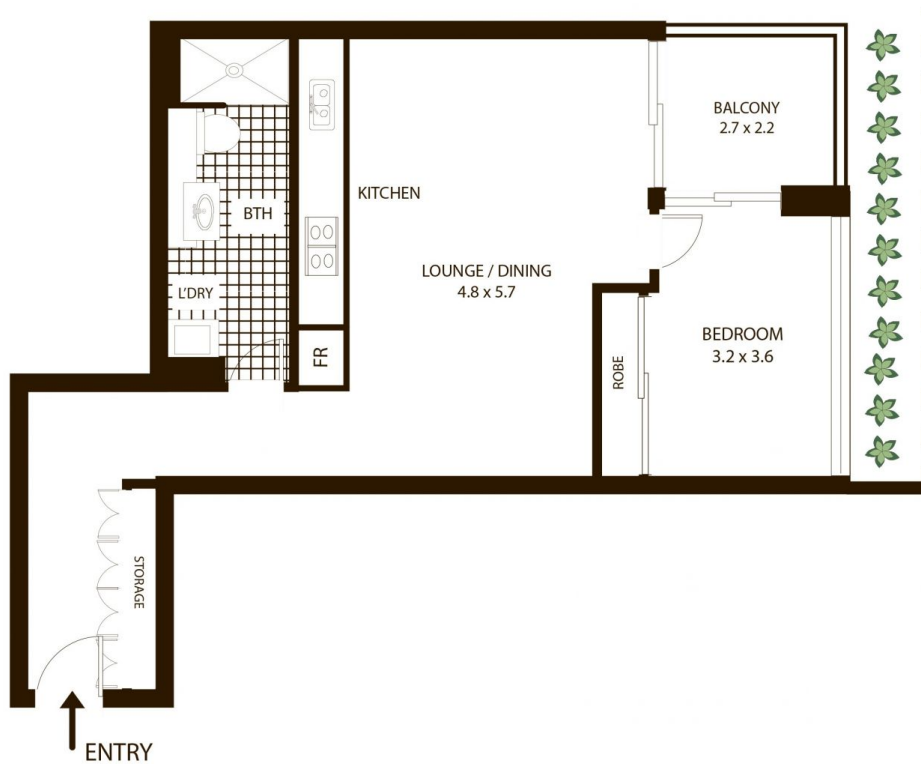
Sarah Fowell

0437 492 129
sarah@morton.com.au

Calvin Chan

0406 888 028
calvin@morton.com.au

morton.com.au



102/13 Joynton Ave Zetland

All measurements are approximate only. Plan is provided as an indication of layout

