



morton.

Pyrmont 15A/5 Tambua Street

3 2 2

Dominated by spectacular views that stretch across the sparkling waters to the Harbour Bridge and the majestic city skyline, this breathtaking residence is the epitome of understated luxury living. In an exclusive blue ribbon community, this is essentially a monument to sophisticated modern design. Set high in what is unquestionably one of the most exclusive and sought-after harbourside communities in Sydney, this exceptional home is an offering of timeless appeal. Metres to harbourside parks, cafes, light rail transport and boutique shopping, it is a pleasant walk to the heart of the city.

- Impeccably appointed with flawless bespoke finishes
- A selection of formal and casual entertaining options with 2 separate living areas
- Flooded with the light of a due northern perspective
- Newly installed carpet throughout
- Double bedrooms with built-ins, master has an ensuite
- CaesarStone & Miele gas kitchen, customised cabinetry
- Low maintenance lifestyle of convenience and quality

View

As advertised or by appointment

Agent

Morton RE

rentals@morton.com.au

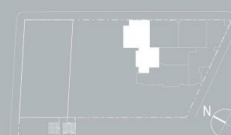
morton.com.au

layout plan

apartment type	a4
apartment no.	14a, 15a, 16a, 17a, 18a
bedrooms	3
apartment area	171 sqm
balcony area	26 sqm
total apartment area	197 sqm

legend / inclusions

AP	appliance cupboard
BATH'M	bathroom
BIR	built-in robe
D	dryer
DW	dishwasher
ENS	ensuite
HTR	heated towel rail
L	linen
L'DRY	laundry
MV	mirror vanity
MW	microwave
OV	oven
P	pantry
PWD	powder room
R	refrigerator space
SL	sliding shutter
ST	storage cupboard
WF	water filter
WIR	walk-in robe
WM	washing machine space



DISCLAIMER: Please note that this floor plan was produced prior to the completion of construction. The information contained herein is believed to be correct but is not guaranteed. Dimensions and areas are approximate. Changes may be made during development and dimensions, tile setout, areas, fittings, finishes and specifications are subject to change without notice in accordance with the provisions of the Contract of Sale. The furniture and curtains depicted are not included with any sale.

NOTE: Bulkheads necessary for services and structure are not depicted.

