



morton.

Wentworth Point 608/6 Nuvolari Place

🛏 2 🚿 2 🚗 1

Well positioned high in what is generally regarded to be one of Wentworth Point's most sought-after communities, this superior residence offers quality modern living without compromise. Flooded with the light of a due north-eastern aspect, views stretch to the nearby parklands.

- Superb design ensures seamless indoor/outdoor living
- Wraparound terrace is ideal for year-round entertaining
- Double bedrooms, built-ins, large master with ensuite
- Deluxe kitchen, CaesarStone benches, gas appliances
- With storage cage, air conditioning and video intercom
- Pet-friendly building, swimming pool, Pulse gym access

View

As advertised or by appointment

Agents

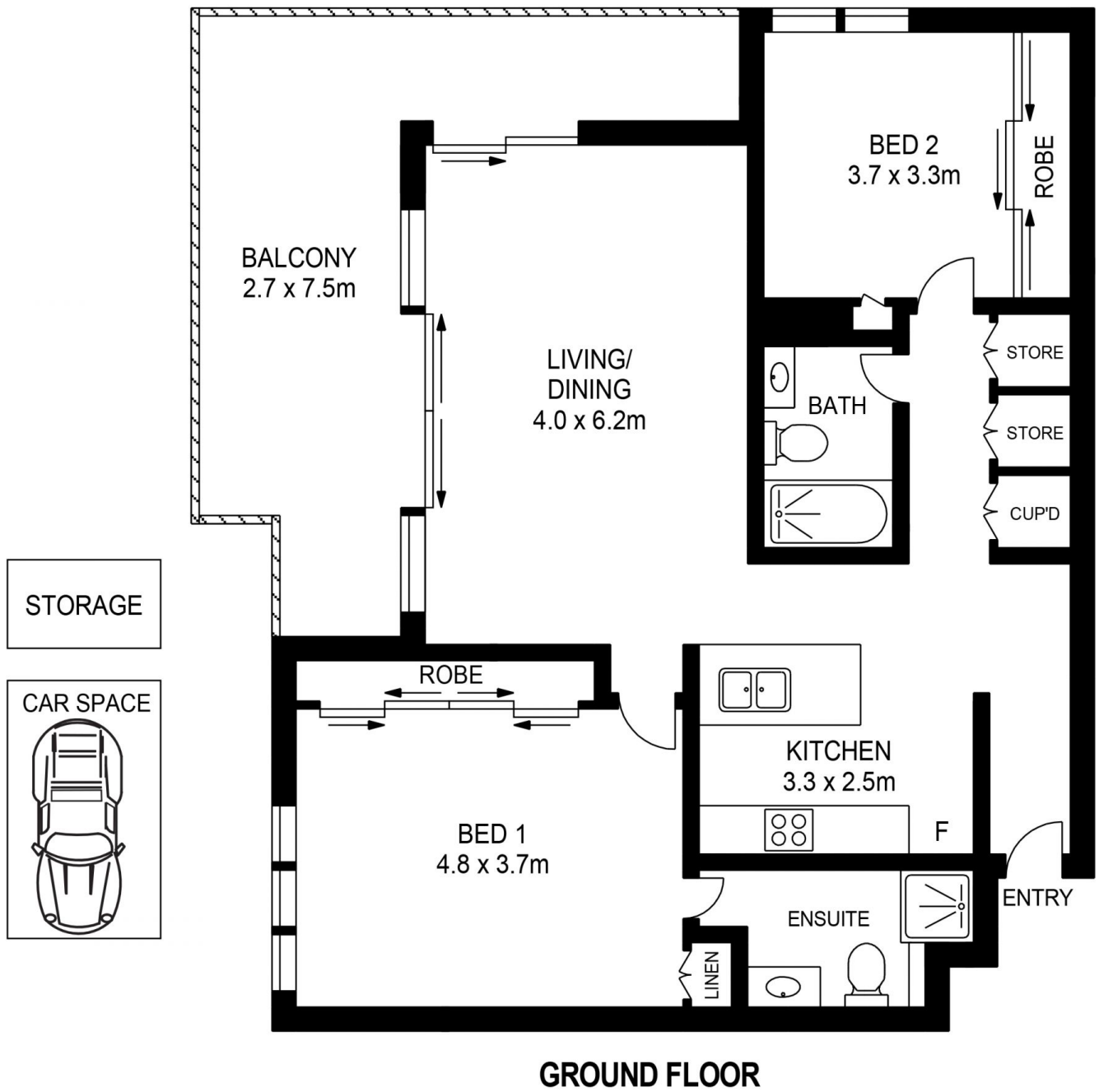
Sarah Fowell

📞 0437 492 129
✉ rentals@morton.com.au

Dylan Choe

📞 0416 932 977
✉ dylanchoe@morton.com.au

morton.com.au



608/6 NUVOLARI PLACE, WENTWORTH POINT

