



morton.

Riverwood 618/5 Vermont Crescent

 2  2  1

This bright and ultra-modern apartment represents a great chance to buy into Washington Park's popular Lakeview building and enjoy the development's lakeside setting amid acres of park-like grounds. Instantly appealing thanks to its stylish presentation and quality design, it offers a high performing property in mint condition surrounded by all the attractions of this celebrated masterplanned community.

- A good-sized open plan layout with living and dining areas
- A wide covered balcony that overlooks landscaped gardens
- Designer stone kitchen equipped with sleek gas fittings
- Two double bedrooms with built-ins plus a separate study
- Security car space and air-con, internal laundry
- Access to cycleways, scenic walks and communal gardens

View

As advertised or by appointment

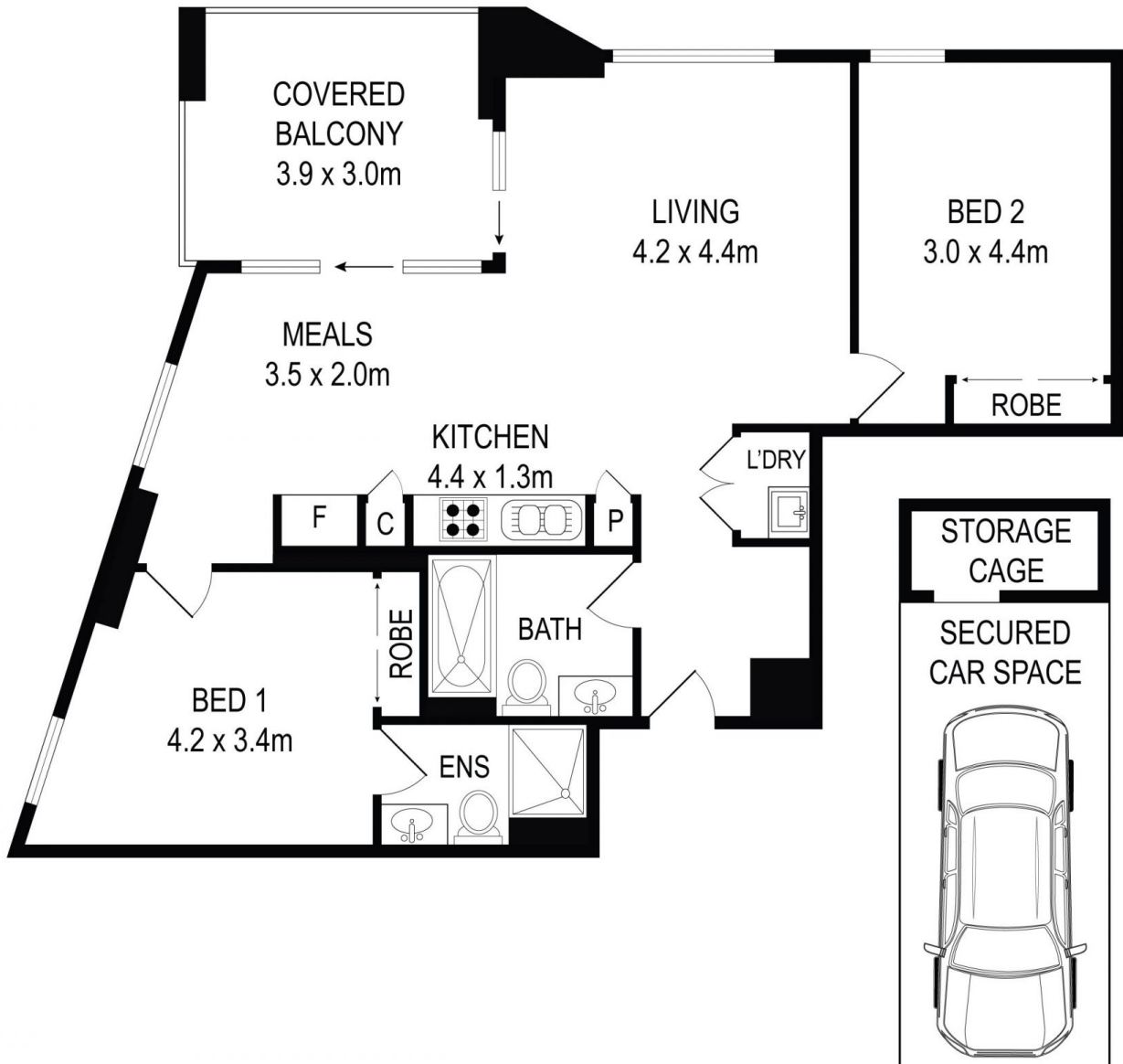
Agent

Calvin Chan

 0406 888 028

 calvin@morton.com.au

morton.com.au



All information contained herein is gathered from all sources we believe to be reliable. However we cannot guarantee its accuracy and interested parties should rely on their own enquiries.



CampaignPROS

morton.

Riverwood 618/5 Vermont Cres