



morton.

Cambridge Park 13 Kerran Close

 3  1  1

Buyers or investors looking for a solid freestanding property on a spacious level landholding would be hard pressed to find better value than this well-presented residence. Set at the end of a quiet cul-de-sac, it offers a comfortable home with fresh and bright interiors, a deep backyard plus excellent future potential to enhance and add extra value if desired.

- Single level layout with generous lounge and dining areas
- Large backyard featuring a paved patio and level lawn
- In-ground swimming pool and poolside entertainment area
- Three double bedrooms include a main with built-in robes
- Neat kitchen, full bathroom plus a separate family/sunroom
- Spacious laundry, ducted air-conditioning throughout
- Lock-up garage with internal access plus lock-up sheds
- Within a stroll to local parks, quality schools and Kingswood station

View

As advertised or by appointment

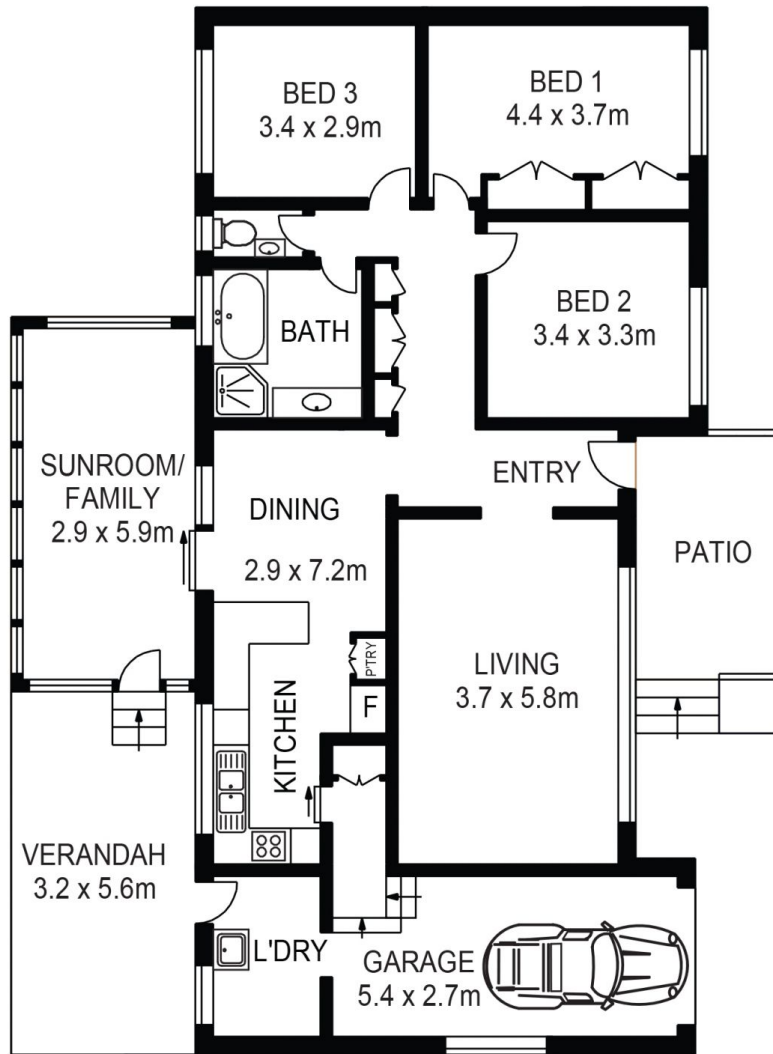
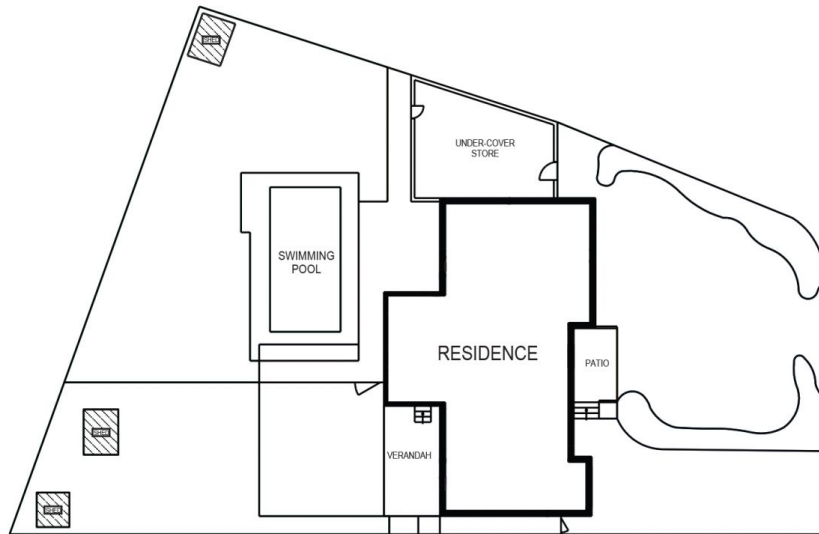
Agent

Ian Ahearn

 0457 483 610

 ian.ahearn@morton.com.au

morton.com.au



13 KERRAN CLOSE, CAMBRIDGE PARK



Please note these measurements are approximate only. The plans are intended as a rough guide for illustrative purposes. It is not warranted or guaranteed to be correct nor is it a part of the sale or rental contract.

