



# morton.

**Woolloomooloo** 526/6 Cowper Wharf Roadway

1 1 1

Split level apartment with water views towards Potts Point from the Woolloomooloo Finger Wharf. This would suit anyone wanting an apartment within walking distance to the CBD.

- Fully renovated
- Unfurnished
- Timber flooring in living area
- Built in wardrobes
- Reverse cycle air conditioning
- Kitchen with gas cooktop and dishwasher
- Large bathroom with bathtub and shower
- Internal laundry with dryer
- Video intercom security
- One car space located at Lincoln Cres
- 24 hour security on site

## View

As advertised or by appointment

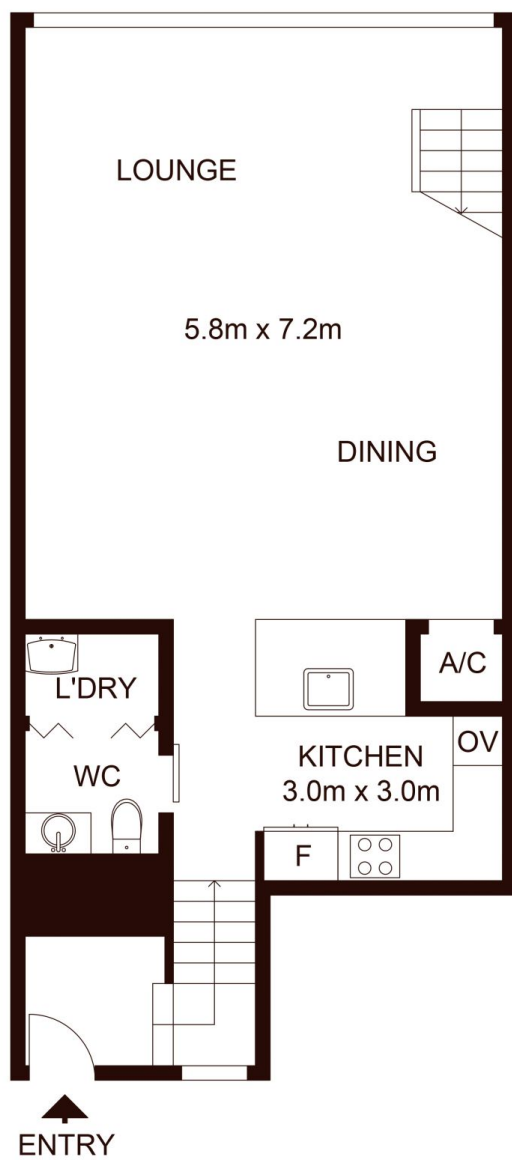
## Agent

**Morton**

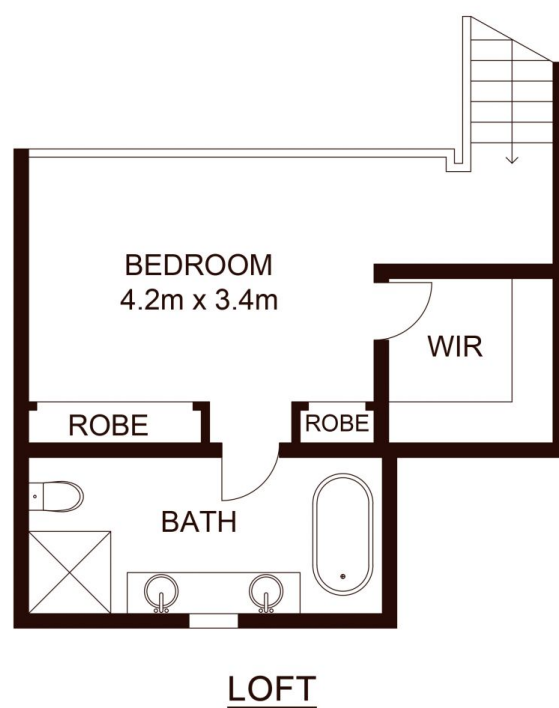


info@morton.com.au

**morton.com.au**



GROUND FLOOR



INTERNAL : 97.5 m<sup>2</sup>

morton.

526/6 Cowper Wharf Road, WOOLLOOMOOLOO

Not to scale • All measurements are approximate • Drawn for marketing purposes only • Floorplan by © Industrie Media

