



morton.

Surry Hills 1201/20 Pelican Street

1 1 1

Monument, one of Surry Hills' most popular buildings offers innovative architecture with an awe-inspiring fusion of glass, light and views. This unfurnished spacious 52sqm one bedroom apartment is the epitome of contemporary cosmopolitan living.

- Open plan living and dining with floorboards and floor to ceiling glass windows
- Sleek electric kitchen with CaesarStone benchtops, Miele oven, stovetop, rangehood and Fisher & Paykel integrated dishwasher
- The master bedroom is complimented with built-ins and recently installed carpet and curtains
- Walk in wardrobe in bedroom
- Large bathroom with oversized shower recess
- Well sized semi enclosed private East facing balcony with district views
- Reverse cycle air conditioning throughout
- Secure basement parking and storage cage included
- Common area consists of sculpted gardens, BBQ area,

View

As advertised or by appointment

Agent

Morton RE

rentals@morton.com.au

morton.com.au

Apartment 401

501

601

701

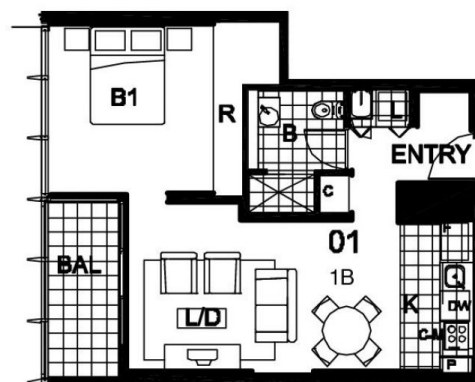
801

901

1001

1101

1201



0 1 2 4 6

