



morton.

Pyrmont 30/56 Pirrama Road

1 1 1

This is a unique opportunity to occupy a designer apartment literally on the harbour's edge. Tightly held and highly sought after is this second level one bedroom residence in this exclusive harbourfront address. Surrounded by Sydney Harbour and parkland this exclusive waterfront address is only moments from the city centre. Walk to Darling Harbour, waterfront restaurants and an array of cafes and speciality shops.

- Tranquil water and private marina views
- Open plan living area, 2.7 metre ceilings
- Exquisite Blackbutt timber floors
- Timber decked balcony with sliding louvre privacy screens
- Miele galley style kitchen with illuminated Onyx splashback
- King sized master bedroom with fitted 'soft close' built-in robes
- Imported Travertine marble bathroom with marble vanity
- Amazing amount of internal storage, ducted air-conditioning
- Internal laundry with Miele washer and dryer
- Concierge, secure parking and storage cage

View

As advertised or by appointment

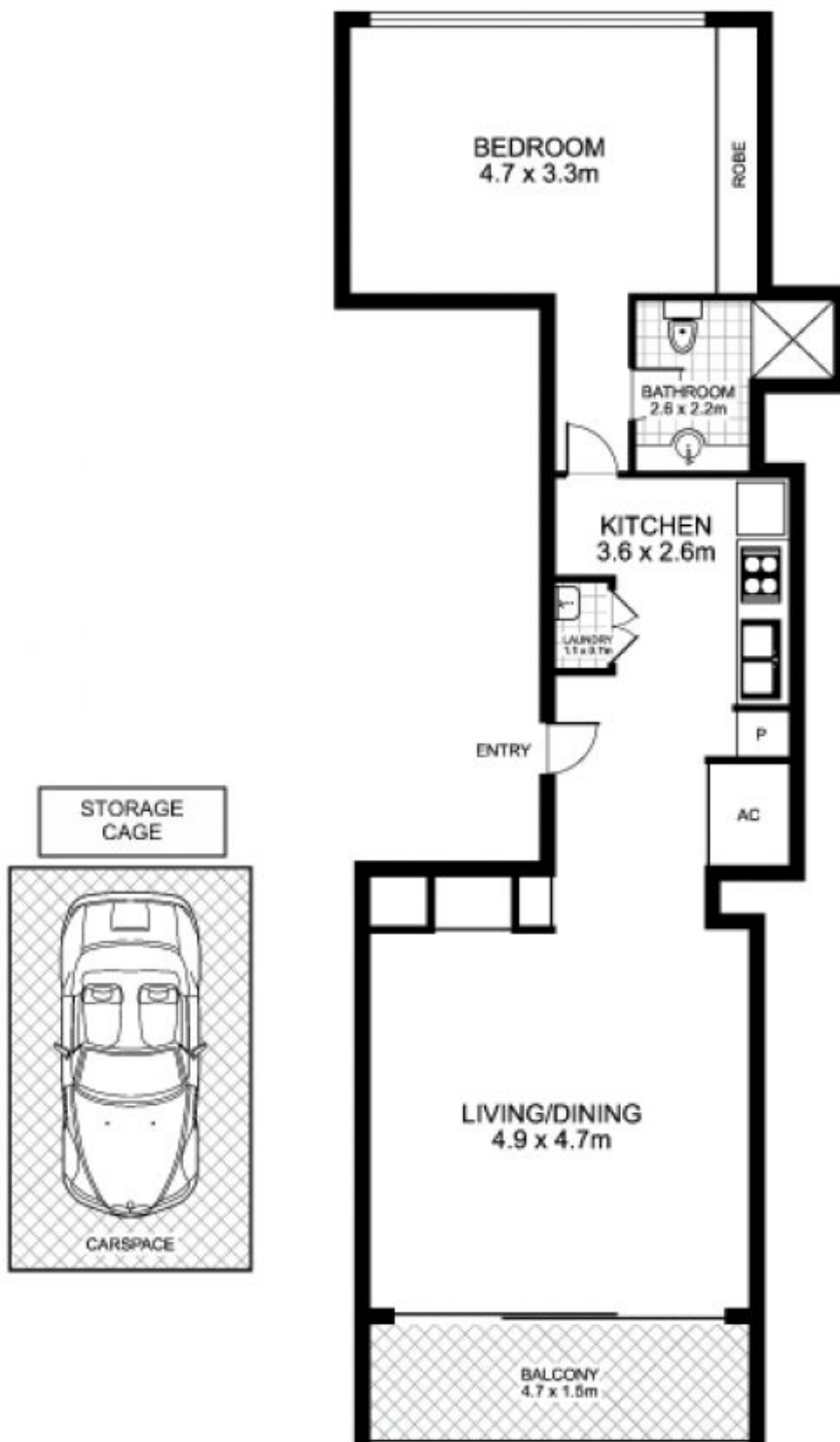
Agent

Morton RE

rentals@morton.com.au

morton.com.au

**30/56 Pirrama Road,
PYRMONT**



NORTH



This floor plan is intended as a guide only. Layout dimensions are approximate only. No representations or warranties of any nature whatsoever are given or intended. Any person using this information should rely on their own enquiries