



morton.

Wentworth Point 113/4 Stromboli Strait

 2  2  1

The Waterfront is located moments to Sydney Olympic Park main venues, train station, Bicentennial Park and Millennium Parklands. Located in Torino, this is your opportunity to move into this two bedroom apartment with courtyard, only a short stroll from The Promenade and The Piazza.

Apartment features:

- Large open plan living area
- Full size kitchen with stainless steel appliances
- Courtyard with street access
- Laundry room with clothes dryer
- Secure undercover single car space

View

As advertised or by appointment

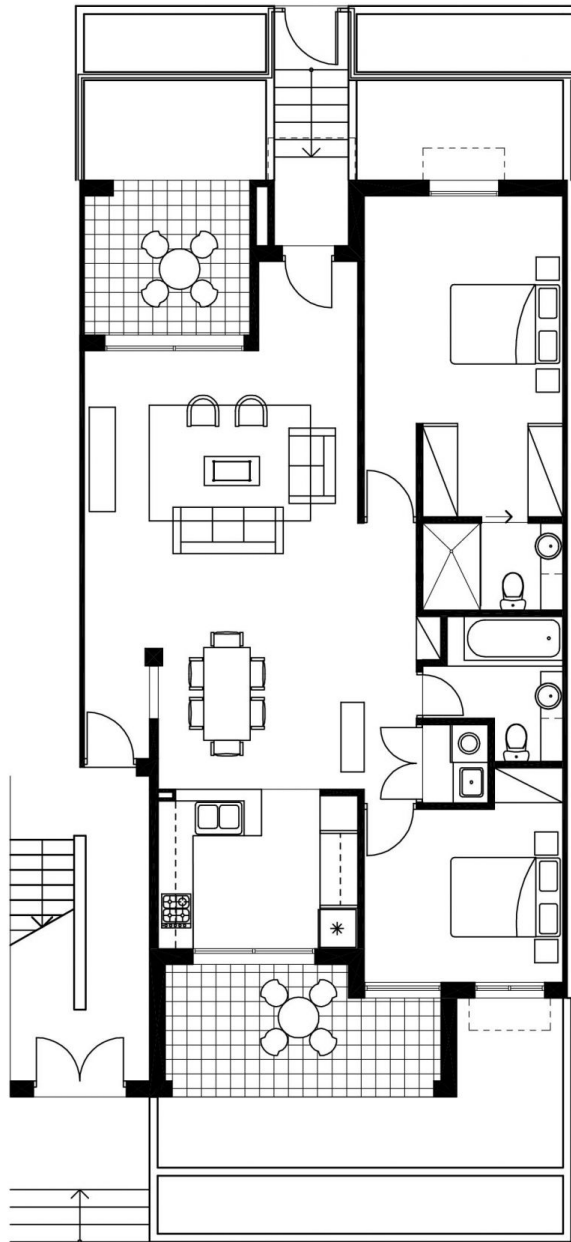
Agent

Morton RE

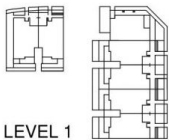


 rentals@morton.com.au

morton.com.au



"The information contained herein is intended as an introduction to the general content of the project and is subject to variation. Interested parties should rely on their own enquiries and the contract for sale. The developer reserves the right to vary from these descriptions as it deems necessary or as any relevant authority may require."



2 BEDROOM

UNIT 113

TYPE A

INTERNAL AREA 96 sqm

OUTDOOR AREA 50 sqm

TOTAL AREA 146 sqm

TORINO