



# morton.

**Penrith** 1012/8 Aviators Way

 2  2  1

Thornton Central apartments are located on the north side of Penrith train station. This stunning split-level penthouse rising to the 11th floor, with sweeping views over the Penrith CBD and the picturesque Blue Mountains. Situated in the master-planned community Thornton Estate, offering convenient apartment living only metres to Westfield shopping centre, local parks and quality restaurants and cafes.

#### Features

- Southwest facing covered balcony with breathtaking mountains views
- Open living and dining with engineered timber flooring, high ceilings
- Double height windows embracing an abundance of natural light
- Eat-in kitchen with stone benchtops, soft close cupboards
- Gas stove top, stainless steel appliances and mirrored splashback
- LED lighting, reverse-cycle A/C in the living and bedrooms
- MATV and payTV points in the living room and bedroom


[morton.com.au](https://morton.com.au)

#### View

As advertised or by appointment

#### Agent

**David Lipman**

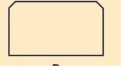
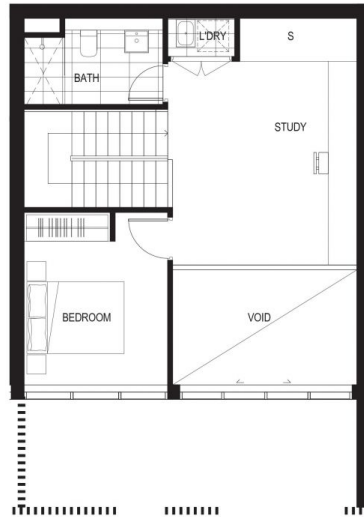
 0409 663 535

 david@morton.com.au

# A1012

## BUILDING A

12 2 1



INTERNAL: 91M<sup>2</sup>  
EXTERNAL: 15M<sup>2</sup>  
TOTAL: 106M<sup>2</sup>



DATE ISSUED: 04.11.2015  
VERSION: 01

Developed by St Hilliers FIRST POINT PROJECTS | Sales by LINK Home & Land Direct [THORNTONCENTRAL.COM.AU](http://THORNTONCENTRAL.COM.AU)

**Disclaimer:** This floor plan has been prepared for marketing purposes only. All descriptions, dimensions, depictions and other details in this floor plan (together, the "Information") may not be to scale. The vendor reserves the right to vary or amend the Information without notice. The Information may vary from the actual dimensions, layout and characteristics of the property as built. No third party has any authority whatsoever, either expressly or impliedly, to make or give any representation or warranty or to bind the vendor in connection with the information or the property.

# Sheffield

THORNTON