



# morton.

**Wentworth Point** 305/2 The Piazza

 2  2  1

Designed for low maintenance living and filled with the natural light of a prized NE aspect, this exceptional residence is quietly set in a renowned harbourside community. Ultra stylish, this is the perfect offering for those that demand quality without compromise, just metres to the water's edge.



- Open plan living with distinct lounge and dining areas
- Generous bedrooms, master boasts walk-in and ensuite
- Sleek gourmet kitchen, stone benches, gas appliances
- Leafy aspect, entertaining terrace, balcony and air con
- Resort facilities include pool, gym, library and tennis courts
- Just metres to cafes, shops and a bustling village lifestyle

### View



As advertised or by appointment

### Agents

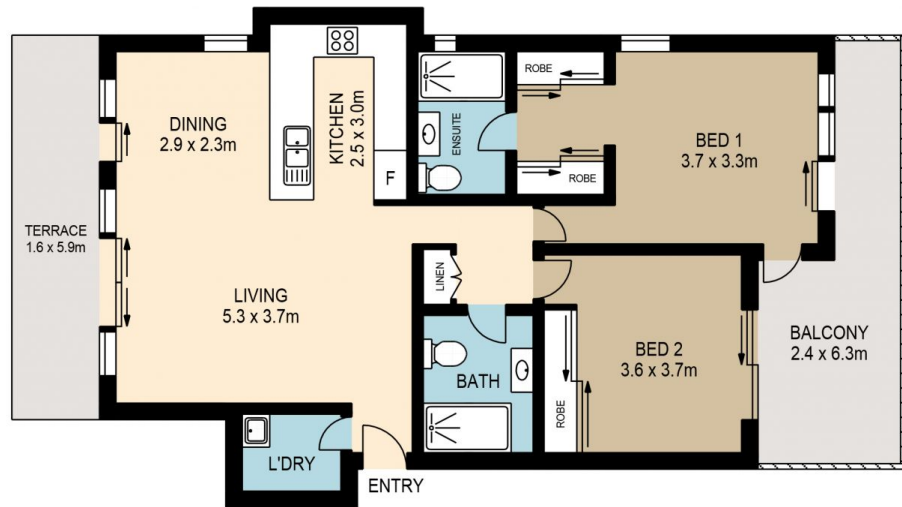
#### Sarah Fowell

 0437 492 129  
 rentals@morton.com.au

#### Dylan Choe

 0416 932 977  
 dylanchoe@morton.com.au

**morton.com.au**



[www.assetphotographers.com.au](http://www.assetphotographers.com.au)

Please note these measurements are approximate only. The plans is intended as a rough guide for illustrative purpose. It is not warranted or guaranteed to be correct nor it is part of the sale or rental contract

