



# morton.

**Penrith** 833/1-39 Lord Sheffield Circuit

 1
  1
  1

Located in the hub of North Penrith, Harts Landing offers contemporary urban living in a master-planned vibrant community called Thornton Estate. Only metres from Penrith train station, Westfield shopping centre, local parks and everything Penrith has to offer.

#### Features

- Northwest facing with picturesque Blue Mountains views
- Tiled open living and dining area, LED lighting throughout
- Filled with natural light from the floor to ceiling windows
- Reverse cycle A/C, block-out roller blinds throughout
- Stylish kitchen with stone bench-tops, soft close cupboards
- Four burner stove top with stainless steel appliances
- Wool-blend carpeted bedrooms with mirrored built-in robes
- NBN ready, TV points in the living & bedroom
- Quality bathroom with mirrored vanity cabinet
- Internal laundry with dryer, study area

#### View

As advertised or by appointment

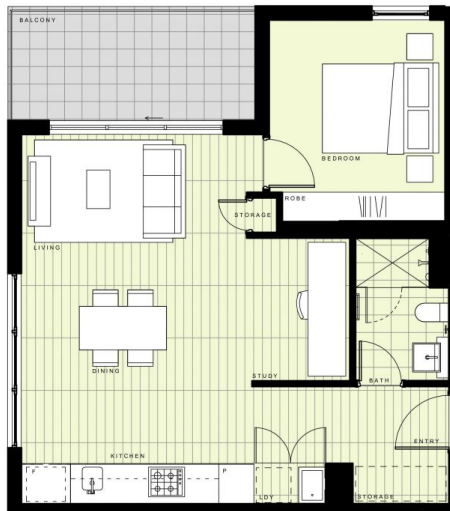
#### Agent

**Amy Torbarina**

 0438 977 172

 amy@morton.com.au

**morton.com.au**



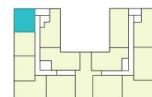
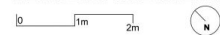
## BUILDING A

### LEVEL 8

#### APARTMENT A833 LOT 102

1 BEDROOM + STUDY

INTERNAL AREA	51m <sup>2</sup>
EXTERNAL AREA	7m <sup>2</sup>
<b>TOTAL</b>	<b>58m<sup>2</sup></b>



Disclaimer: This floor plan has been prepared for marketing purposes only. All descriptions, dimensions, depictions and other details in this floor plan may not be to scale and may vary from the property as built. Your attention is drawn to the special conditions of the contract for sale of land. No third party has any authority to make or give any representation or warranty in relation to the property unless the representation or warranty is confirmed by the vendor and included in the contract for sale of land. Revised floor plans - 14.08.18

**CALL 1300 546 588**  
**HARTSLANDING.COM.AU**  
 LORD SHEFFIELD CIRCUIT, PENRITH  
**LINK DISPLAY SUITE**  
 22 GADIGAL AVENUE, ZETLAND

PROUDLY DEVELOPED BY **PAYCE** SALES BY **LINK**