



# morton.

**Pymont** 704/32 Refinery Drive

🛏 2 🚿 2 🚗 1

Come and live a premium harbourfront lifestyle in this light filled 'Clearwater' residence that sets the scene with its spacious single level design, well-proportioned floor plan and relaxing water views from every room. Facing north-east over Jones Bay, it provides the perfect home for living and entertaining and has all the resort amenities of the Jacksons Landing Estate at your doorstep.

- Only two apartments per floor with level lift access
- A flowing open design featuring lots of natural light
- A private and sunlit balcony that flows off the living space
- Two bedrooms are positioned at opposite ends of the floorplan
- Well-appointed kitchen with quality fittings and island bench
- Full ensuite and good-sized main bathroom with internal laundry
- Security car space plus a storage cage and 24/7 on-site security
- Swimming pools, spa, gym and tennis courts for use of residents

**morton.com.au**

## View

As advertised or by appointment

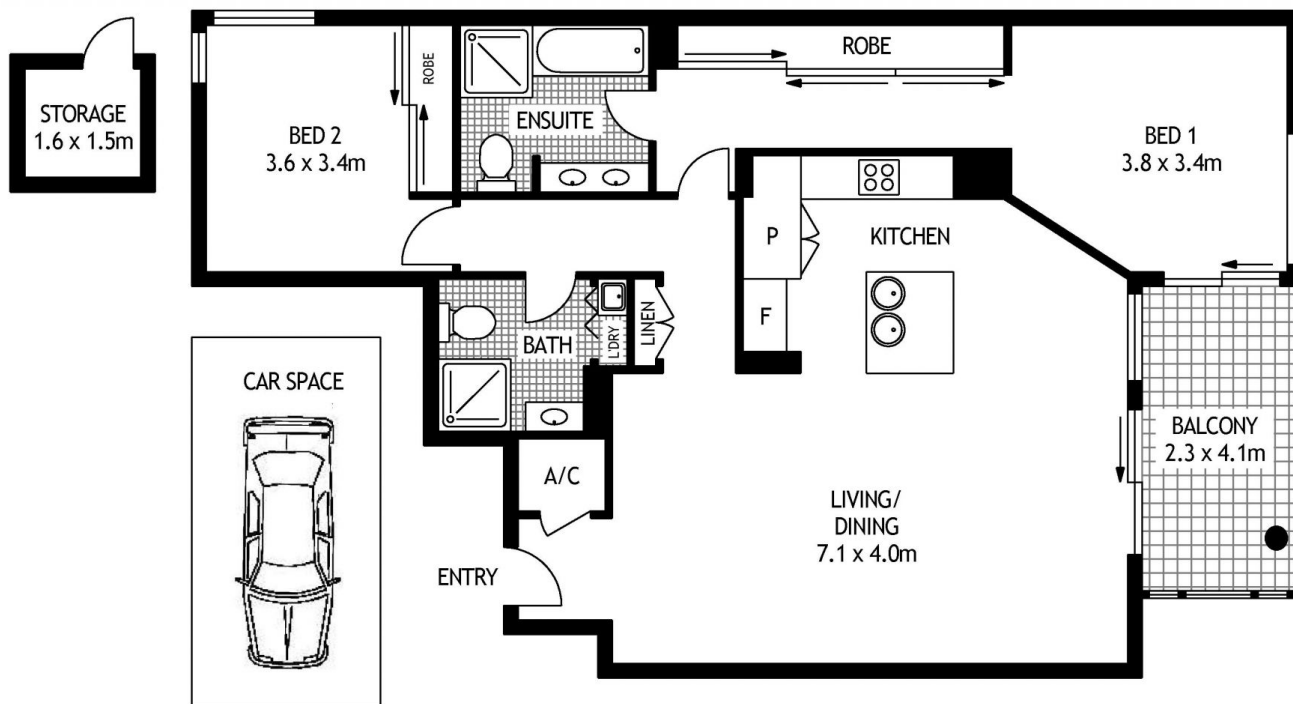
## Agents

### Ian Qiu

📞 0447 696 425  
✉ ian@morton.com.au

### Natasha Giannone

📞 0438 683 859  
✉ natasha@morton.com.au



SEVENTH FLOOR



704/32 REFINERY DRIVE

PYRMONT

SCAPE Floor Planing Disclaimer: This floor plan is conceptual only. it is provided for illustrative purposes only and should not be relied upon. We make no guarantees to the correctness of this plan. All interested parties should make and rely on their own enquiries in determining the accuracy of the information contained in this floor plan.