



# morton.

**Penrith** 207/101A Lord Sheffield Circuit

 1  1

Located next to Penrith train station and across the rail line to Westfield, this 65 sqm one bedroom unfurnished apartment in the as-new Thornton development (completed December 2016), offers convenient living in a master planned community only metres from all the amenities and transport you'd expect.

#### Features

- Lv 2, South facing, covered balcony, garden views, flyscreens
- Carpeted open living and dining area, LED lighting throughout
- Filled with natural light from the floor to ceiling windows
- Reverse cycle air conditioning, block-out roller blinds throughout
- Stylish gallery kitchen with stone bench-tops, soft close cupboards
- Four burner stove top with stainless steel appliances
- Wool-blend carpeted bedroom with mirrored built-in robes
- NBN ready, MATV/PayTV points in living & bedroom
- Quality bathroom with mirrored vanity cabinet

#### View

As advertised or by appointment

#### Agent

**Amy Torbarina**

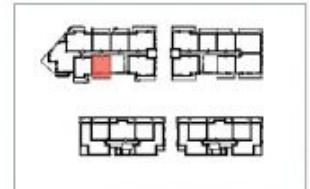
 0438 977 172

 amy@morton.com.au

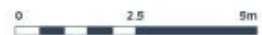
**morton.com.au**



## *Apartment* *A207 1 Bed*



Internal	54 m <sup>2</sup>
External	14 m <sup>2</sup>
<b>Total</b>	<b>68 m<sup>2</sup></b>



**THORNTON**  
ThorntonCentral.com.au

Developed by **St Hilliers** **FIRST POINT PROJECTS** | Sales by **LINK**

Disclaimer: This floor plan has been prepared for marketing purposes only. All descriptions, dimensions, depictions and other details in this floor plan together with the information may not be to scale. The vendor reserves the right to vary or amend the information without notice. The information may vary from the actual dimensions, layout and characteristics of the property as built. No third party has any authority whatsoever, either as agents or employees, to make or give any representation or warranty or to bind the vendor in connection with the information or the property.

Deletion and: 23/02/2014. Version: 01