



morton.

Ermington 106/24-32 Koorine Street

🛏 2 🚿 2 🚗 1

Peacefully positioned in Ermington's foremost waterfront community, this stunning apartment offers a lifestyle of understated luxury throughout. Beautifully presented with clean architectural lines, this is the perfect home for the investor, downsizer or first-time owner seeking the ultimate in riverside living.

- Opening to the ambient light of a northern aspect
- Flawlessly appointed with absolutely nothing to add
- Formal/casual entertaining spaces, winter garden
- Double bedrooms, built-ins, master has an ensuite
- Deluxe kitchen, stone benches and gas appliances
- Air conditioning and porcelain timber look tiles

View

As advertised or by appointment

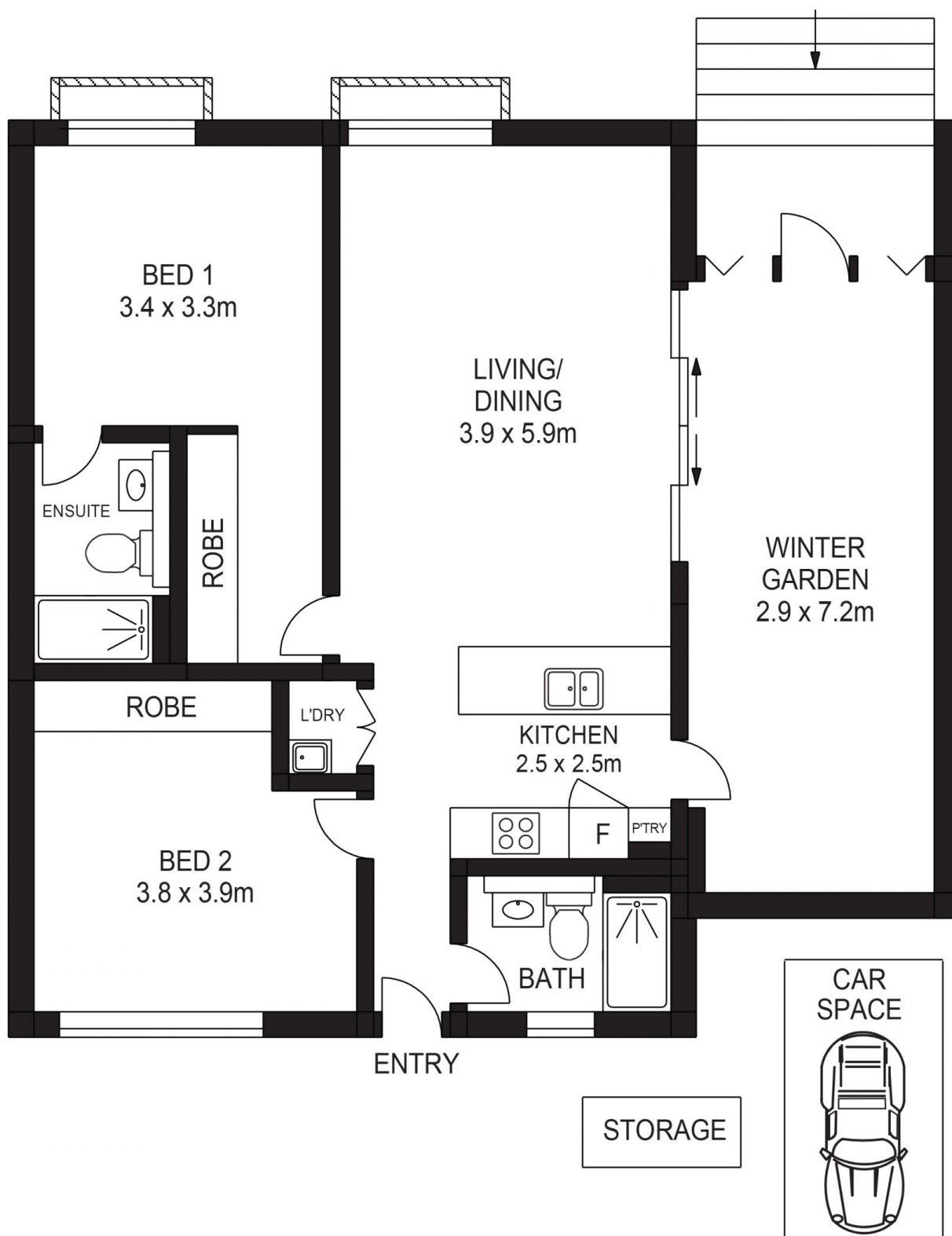
Agent

Dylan Choe

📞 0416 932 977

✉️ dylanchoe@morton.com.au

morton.com.au



106/24 KOORINE STREET, ERMINGTON



ASSET
PHOTOGRAPHERS

www.assetphotographers.com.au

Please note these measurements are approximate only.
The plans are intended as a rough guide for illustrative
purposes. It is not warranted or guaranteed to be correct
nor is it a part of the sale or rental contract.

