



morton.

Pymont 801/24 Refinery Drive

🛏 2 🚿 2 🚗 1

Living in Jacksons Landing is at its finest when you are located right on the waterfront and commanding elevated views across Jones Bay to the Anzac Bridge. This designer home combines this with smart stylish interiors, a light-filled layout and many quality design features to deliver an excellent low-maintenance home in the highly regarded 'Bridgeview' complex.

- Sweeping water views are captured from all major rooms
- Generous open plan design with a great crossflow of air
- Two bedrooms set at opposite ends of the floorplan
- A sunlit balcony makes a great entertainment space
- Quality island kitchen fitted with sleek gas appliances
- Full bath ensuite, guest bathroom and internal laundry
- Secure parking space plus lock-up storage and lift access
- Access to two swimming pools, tennis courts and gyms

View

As advertised or by appointment

Agents

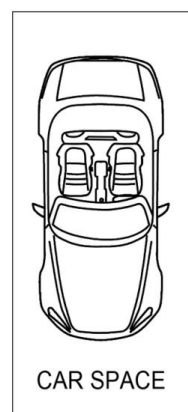
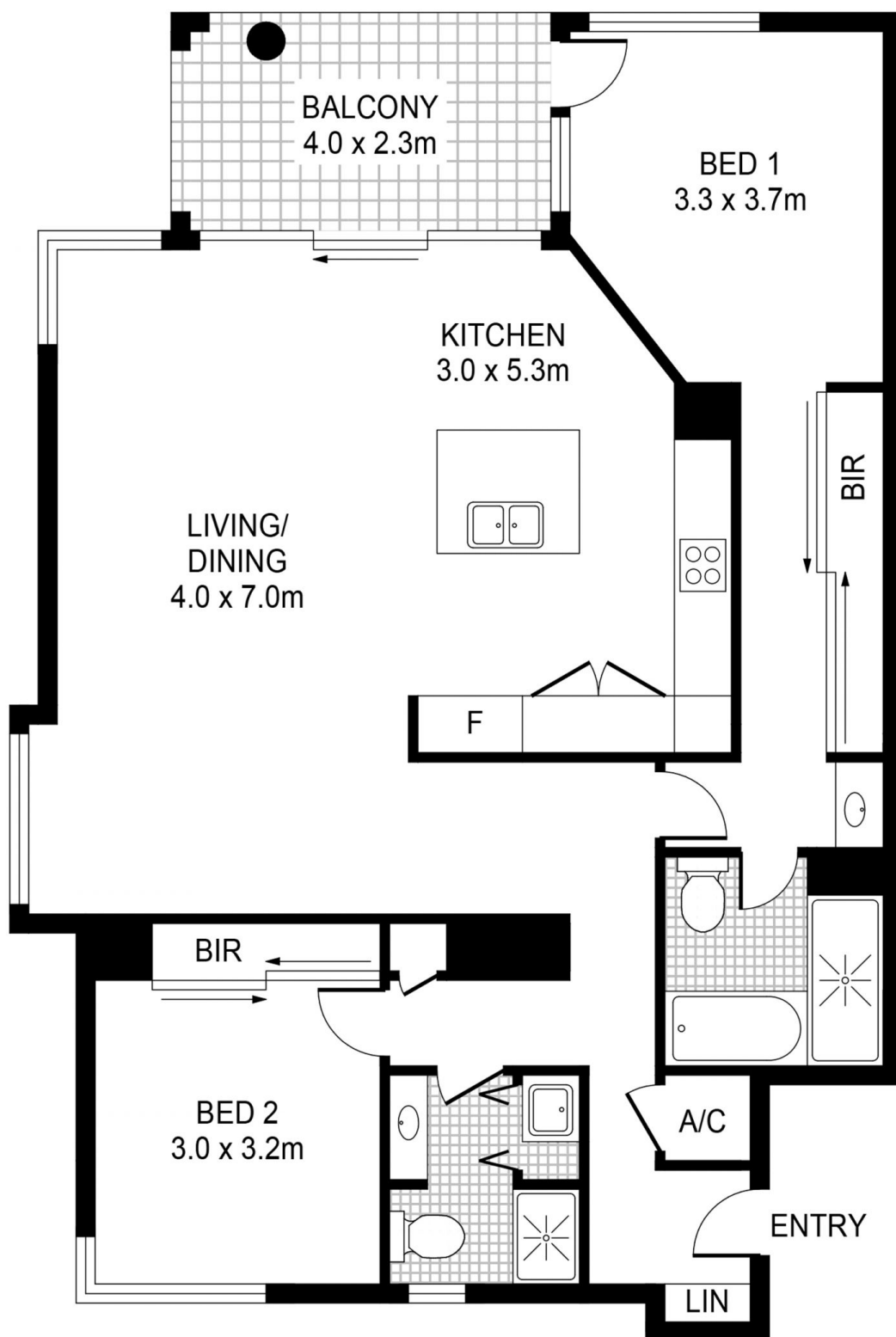
Ian Qiu

📞 0447 696 425
✉ ian@morton.com.au

Natasha Giannone

📞 0438 683 859
✉ natasha@morton.com.au

morton.com.au



STORAGE

PLANS SHOWN ONLY INDICATIVE OF LAYOUT. DIMENSIONS ARE APPROXIMATE.



PYRMONT 801/24 Refinery Dr

morton.