



# morton.

**Kingswood** 10/206 Great Western Highway

2 
 2 
 1

## View

As advertised or by appointment

## Agent

**Amy Torbarina**

0438 977 172

amy@morton.com.au

Conveniently located and beautifully presented, this unfurnished stylish and spacious as new two bedroom apartment is 83 sqm featuring a terrace and reverse-cycle air con in the living and ceiling fans to the bedrooms, has quality designer finishes and is ideal for the busy professional, close to all the amenities required, including being across the road from Kingswood train station and the upgraded Nepean Hospital and 2km to Penrith Westfield and train station.

- Tiled open living and dining, vertical blinds and flyscreens, reverse-cycle air conditioning, TV and Foxtel outlet, NBN ready, opening onto the large 10 sqm alfresco terrace.
- Entertainer's eat-in gas kitchen is tiled, stainless steel appliances incl dishwasher, ample storage and stone bench space, dual sink, laundry in kitchen.
- Carpeted bedrooms with built-in mirrored robes, master with ensuite and walk-in robes, both with ceiling fans.
- Main bathroom with bath tub and shower head rose and stylish marble look tiled feature wall to the ceiling.
- Secure basement parking, storage cage, security entrance,

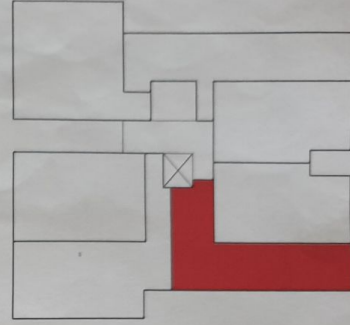
**morton.com.au**



Apartment No.	Areas
---------------	-------

207

2 BED (INTERNAL)	73 m <sup>2</sup>
TERRACE	10 m <sup>2</sup>
83 m <sup>2</sup>	



KEY PLAN

FLOOR PLAN

