

morton.

Riverwood 632/5 Vermont Crescent

 1  1  1

Impeccably appointed and designed for those that seek a seamless lifestyle that blends simple elegance with ultra contemporary functionality, this stunning residence is a home of unquestionable excellence. Ideally suited to the discerning investor or professional couple alike, this is modern living at its finest.

- A modern haven of undeniable quality and substance
- Open plan lounge and dining area, protected balcony
- Sleek integrated kitchen, stone benches, gas appliances
- Inviting double bedroom with mirrored built-in wardrobes
- Air conditioning, secluded study and European laundry

View

As advertised or by appointment

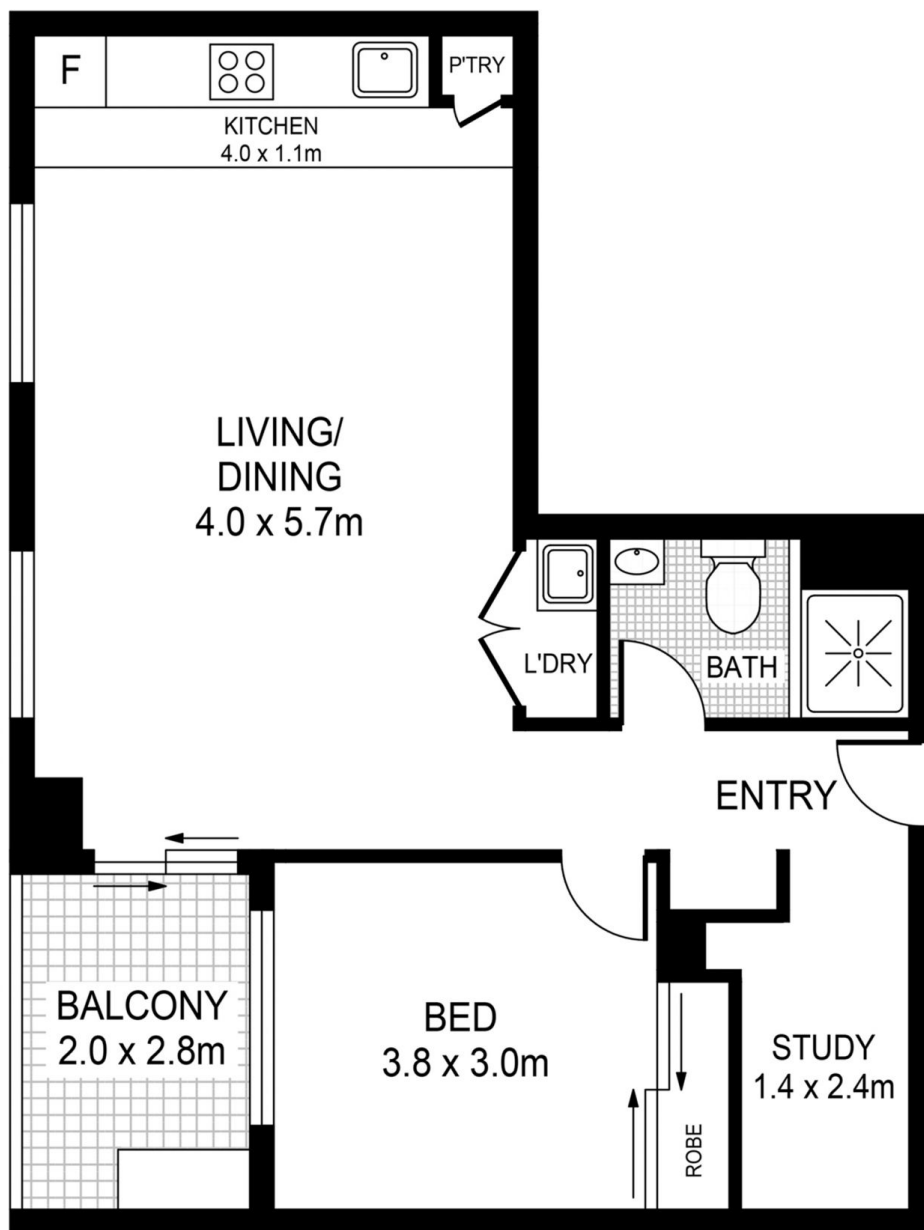
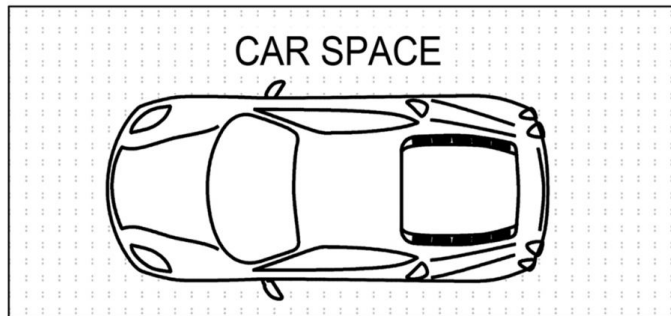
Agent

Lisa Xi

 0401 311 667

 lisa@morton.com.au

morton.com.au



632/5 Vermont Cres RIVERWOOD



This floor plan including furniture, fixture measurements and dimensions are approximate and for illustrative purposes only. Image Mountain gives no guarantee, warranty or representation as to the accuracy and layout. All enquiries must be directed to the agent, vendor or party representing this floor plan.