



morton.

Wentworth Point 712/14 Baywater Drive

 1
  1
  1

The Waterfront is located moments to Sydney Olympic Park main venues, train station, Bicentennial Park and Millennium Parklands. Located in Messina, this is your opportunity to move into this two bedroom apartment only a short stroll from The Promenade and The Piazza.

- Combined living and dining rooms
- Air conditioning
- Full size kitchen with modern stainless steel appliances
- Gas cooking and quality finishes throughout
- Generous size separate living areas
- Good size bedroom with built-in wardrobes
- Good size balcony
- Laundry room and clothes dryer
- Single car space and storage cage.

View

As advertised or by appointment

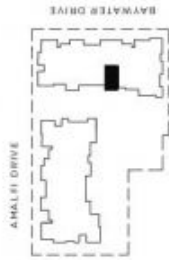
Agent

Sarah Fowell

 0437 492 129

 rentals@morton.com.au

morton.com.au



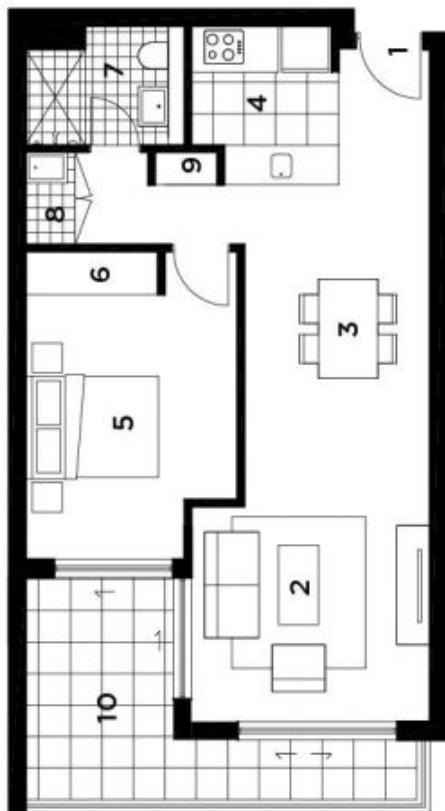
LOCATION

UNIT 712 1 BEDROOM

INTERNAL	57 sqm
BALCONY	10 sqm
TOTAL AREA	67 sqm

KEY:

- 1 Entry
- 2 Living
- 3 Dining
- 4 Kitchen
- 5 Bedroom
- 6 Wardrobe
- 7 Bathroom
- 8 Laundry
- 9 Store
- 10 Balcony



28.10.2010
REV. D



Disclaimer: The particulars are set out as a general outline for the guidance of intending purchasers and do not constitute an offer or contract. All measurements, dimensions, volumes, etc. are approximate and may vary from the actual. The purchaser is advised to verify the accuracy of the particulars and to obtain professional advice. The particulars are not to be relied upon for any purpose other than for general information only. The purchaser is advised to obtain professional advice. The particulars are not to be relied upon for any purpose other than for general information only. The purchaser is advised to obtain professional advice.

