



**morton.**

**Woolloomooloo** 501/6 Cowper Wharf Roadway

🏠 1 📄 2

Stylish harbourfront living takes a sleek and modern turn in this architect designed apartment that enjoys a prime position within the acclaimed 'Finger Wharf' development. Superbly renovated throughout and capturing sparkling views over the water to the city, it offers an easy care executive retreat with 93sqm of living space, and is strolling distance to the CBD.

- City views across the botanic gardens with bridge glimpses
- Bright open design with generous living and dining spaces
- Double height ceilings, oak flooring and wall-to-wall windows
- Upper level loft bedroom with walk-in and deluxe ensuite
- Stunning kitchen with sleek gas fittings and breakfast bar
- Extra downstairs study space and concealed pull-down bed
- Intercom entrance, lift access, car space and lots of storage

**View**

As advertised or by appointment

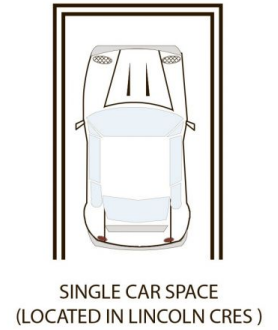
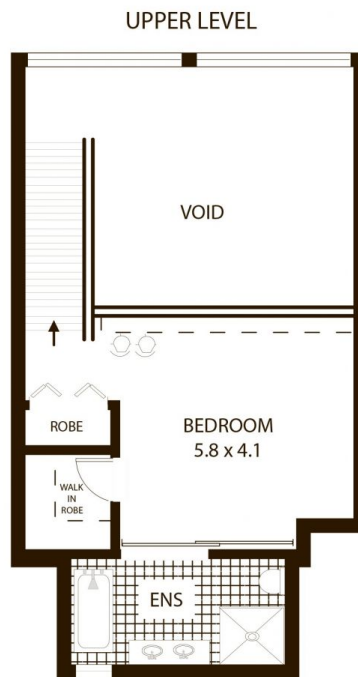
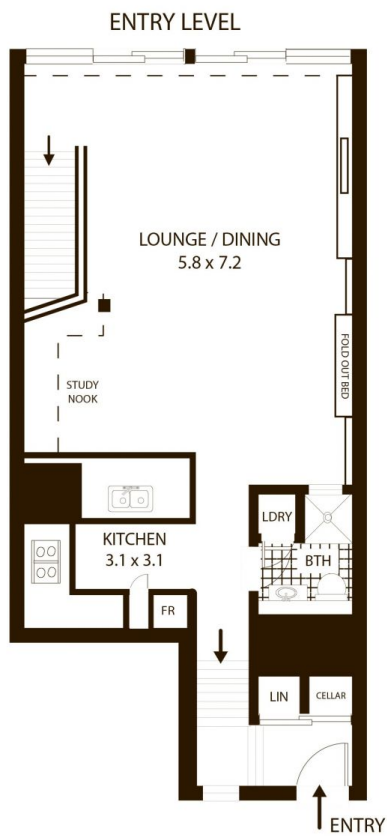
**Agent**

**Noel Jenkins**

📞 0410 593 694

✉️ noel@morton.com.au

[morton.com.au](http://morton.com.au)



# 501/6 Cowper Wharf Rd, Woolloomooloo

All measurements are approximate only. Plan is provided as an indication of layout

