



morton.

Homebush West H306/81-86 Courallie Avenue

2 2 1

In what is generally considered to be Homebush West's most exclusive community 'Centenary Park Estate', this quality apartment offers simple modern living without compromise. In a central setting ten minutes to the Inner West, Olympic Park and Ryde, this is an ideal first home or investment opportunity.

- A low maintenance haven of exclusivity and taste
- Separate lounge and dining areas, large balcony
- Superior grade interiors with designer appointments
- Double bedrooms, built-ins, master has an ensuite
- Chic kitchen has stone benches, gas appliances
- Secluded study/guest bedroom, storage, air-con

View

As advertised or by appointment

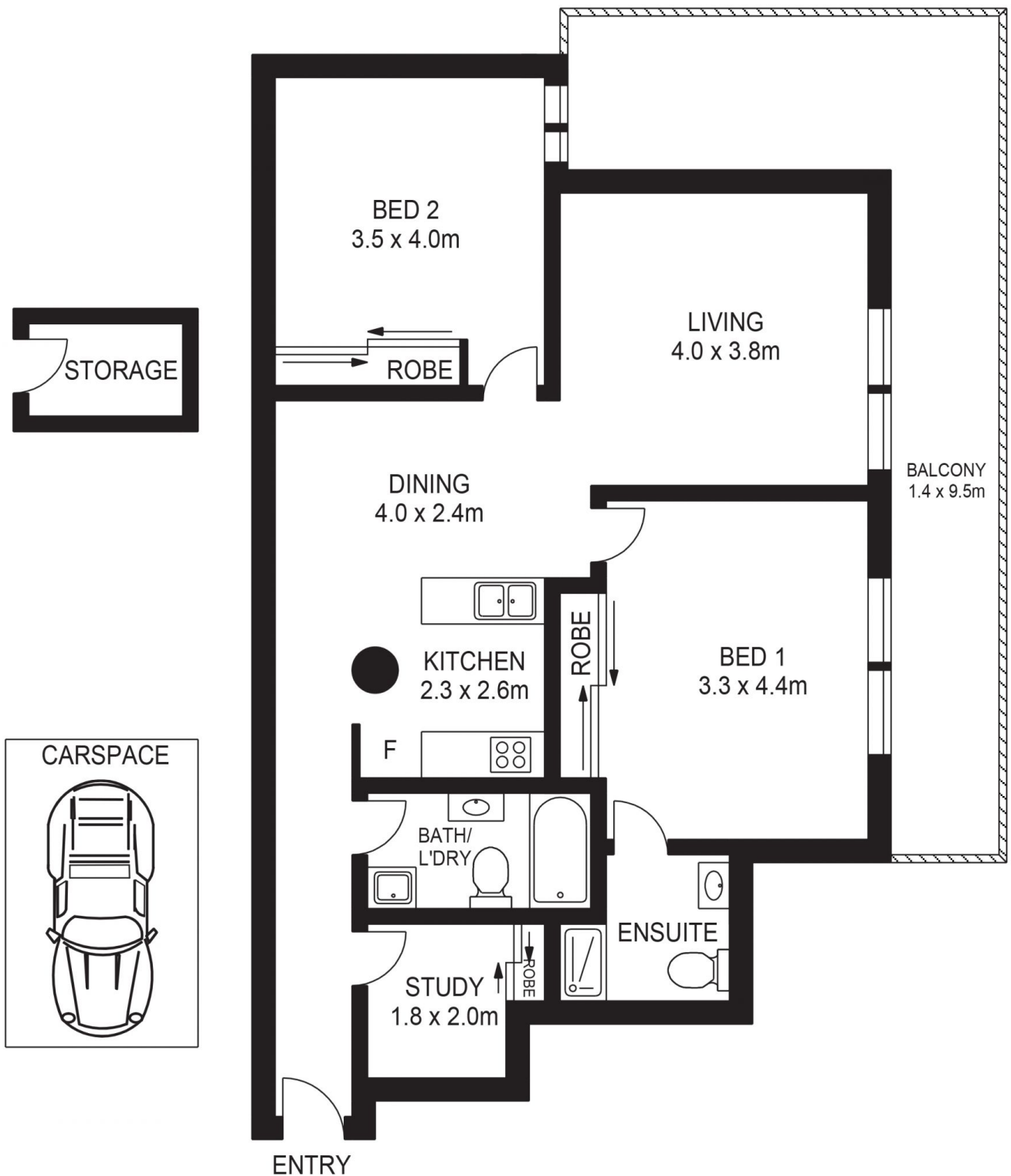
Agent

Dylan Choe

0416 932 977

dylanchoe@morton.com.au

morton.com.au



H306/81 COURALLIE AVENUE, HOMEBUSH WEST



ASSET
PHOTOGRAPHERS

www.assetphotographers.com.au

Please note these measurements are approximate only.
The plans are intended as a rough guide for illustrative
purposes. It is not warranted or guaranteed to be correct
nor is it a part of the sale or rental contract.

