



morton.

Zetland 606/13 Joynton Avenue

1 1

This spacious one bedroom apartment is located in the latest stage of Emerald Park incorporating everything for Inner city living. Superbly designed by Frank Stanisic with a vision of sustainability and space, it is a location which is highly desirable.

- Deluxe bedroom with Built-in wardrobes
- High quality finishes throughout
- Spacious bathroom with elegant fittings
- Open plan living with glazed facade
- Common swimming pool and BBQ facilities

View

As advertised or by appointment

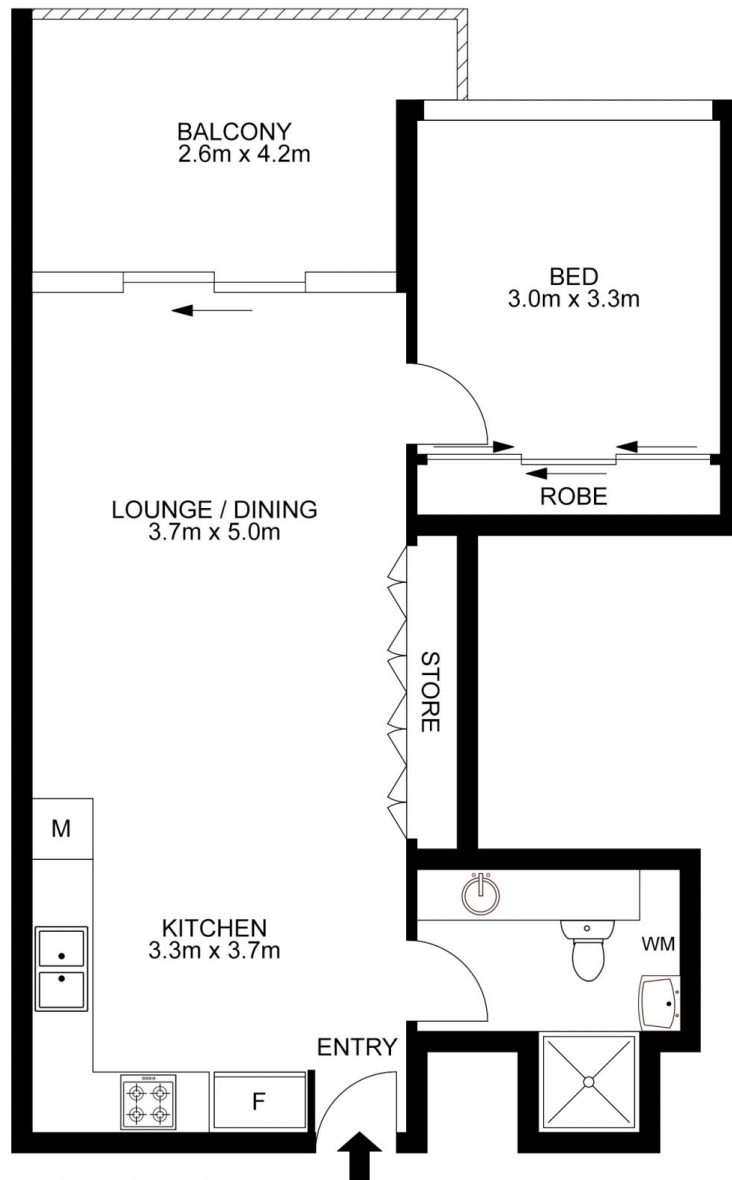
Agent

Sarah Fowell

0437 492 129

sarah@morton.com.au

morton.com.au



All information contained herein is gathered from all sources we believe to be reliable. However we cannot guarantee its accuracy and interested parties should rely on their own enquiries.



morton.

Zetland 606/13 Joynton Avenue