




# morton.

**Sydney** 17/16 O'Connell Street

 4  2

Occupying a premier central setting in a renowned Art Deco building, this remarkable tri-level penthouse presents a truly rare opportunity. Beautifully appointed with both residential and commercial zoning, this quality offering is the perfect executive retreat or unique city office space.

- Well proportioned and flowing over an impressive 244sqm
- Expansive living areas with a massive entertaining terrace
- Generous secluded master with ensuite, walk-in, balcony
- Modern marble kitchen boasts Smeg electric appliances
- Reverse cycle air conditioning, security lift access, Vergola
- With a spa bath, marble entry foyer and bespoke cabinetry
- Perfectly suited to the discerning boutique creative industries

### View

As advertised or by appointment

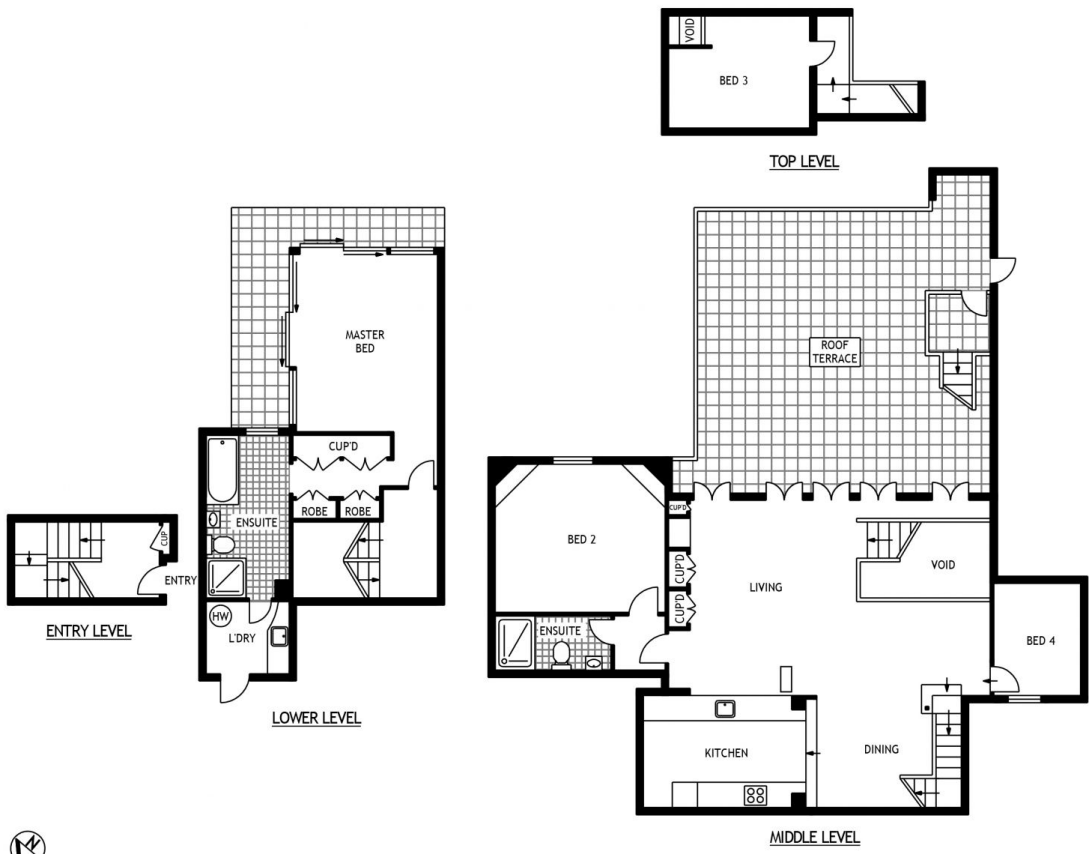
### Agent

**Ettiene West**

 0410 593 749

 ettiene@morton.com.au

[morton.com.au](http://morton.com.au)



17/16 O'CONNELL STREET

SYDNEY

SCAPE Floor Planning Disclaimer: This floor plan is conceptual only. It is provided for illustrative purposes only and should not be relied upon. We make no guarantee to the correctness of this plan. All interested parties should make and rely on their own enquiries to determine the accuracy of the information contained in this floor plan.