



morton.

Wentworth Point 514/14 Nuvolari Place

2 2 1

Bathed in natural light courtesy of a desirable due northern perspective and impeccably presented with the finest of contemporary comforts, this stunning residence is a home of unquestionable quality. In a highly prized building, it is just a ten minutes walk to Rhodes Station.

- Clever configuration encourages effortless entertaining
- Double bedrooms, built-ins, spacious master with ensuite
- Deluxe kitchen, Caesarstone benches, gas appliances
- With storage cage, air conditioning and video intercom
- Sun-washed balcony, secure undercover parking space
- Pet-friendly building, swimming pool, Pulse gym access

View

As advertised or by appointment

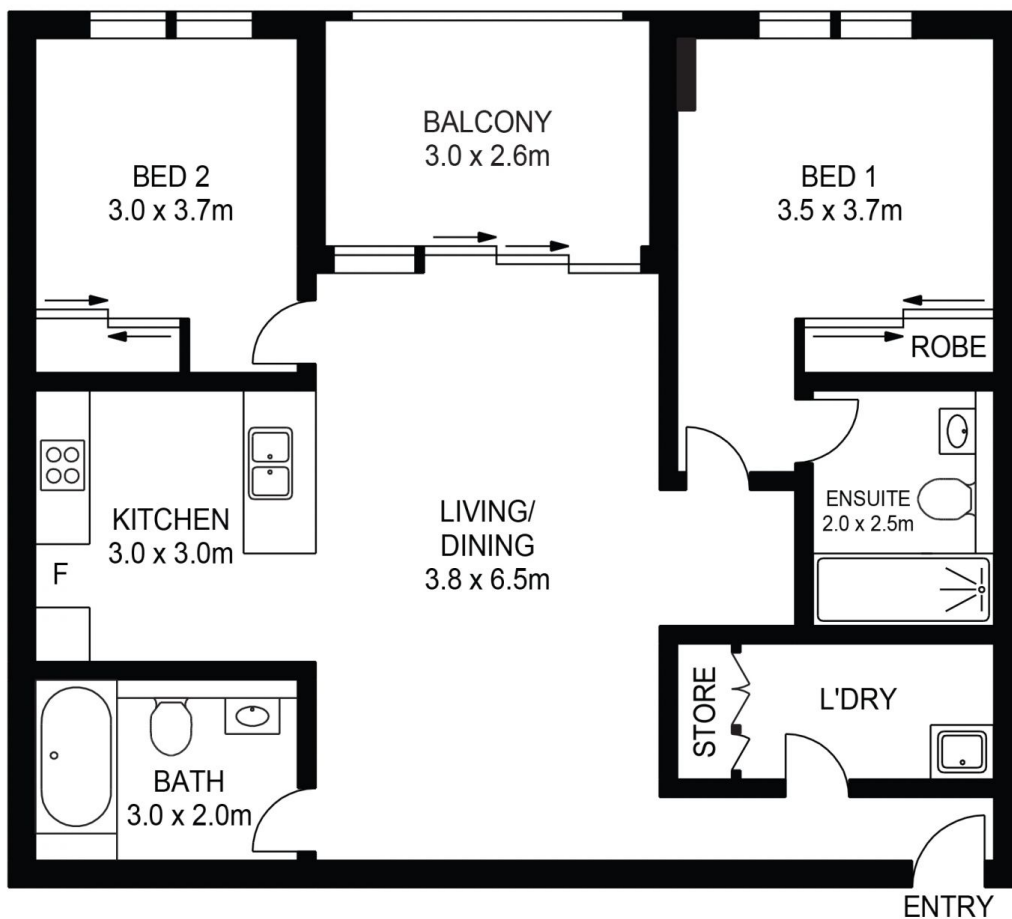
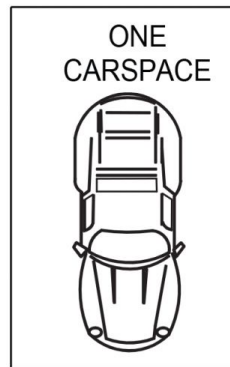
Agent

Dylan Choe

0416 932 977

dylanchoe@morton.com.au

morton.com.au



514/14 NUVOLARI PLACE, WENTWORTH POINT



ASSET
PHOTOGRAPHERS

www.assetphotographers.com.au

Please note these measurements are approximate only.
The plans are intended as a rough guide for illustrative
purposes. It is not warranted or guaranteed to be correct
nor is it a part of the sale or rental contract.

