



morton.

Wentworth Point 13082/17-19 Amalfi Drive

 2
  1
  1

Here is your opportunity to reside in Wentworth Point's finest and latest, One The Waterfront. One the Waterfront offers a unique luxury lifestyle with high end indoor and outdoor facilities to entertain you all year round. Located at the foot of Wentworth Point, One the Waterfront is in easy access to transport services to Rhodes, Parramatta and Circular Quay.

- Timber floor for the living room
- Split level with Olympic Park views
- Quality designer kitchen with Bosch built-in appliances
- Security parking space
- Air-conditioning, video intercom entry and lift access
- Beautiful communal gardens with landscaped surrounds
- Views to the water, parklands and the CBD skylines
- Walk to restaurants, Olympic Park, Ferry Wharf and speciality stores

Register your interest now for inspections.

View

As advertised or by appointment

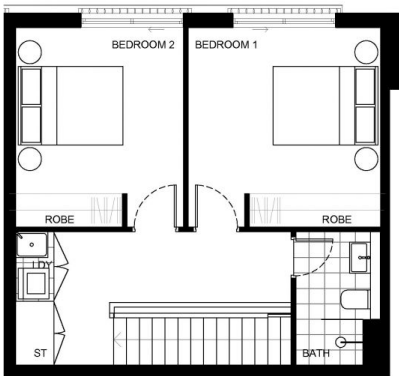
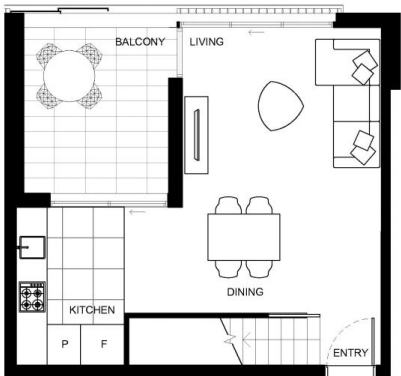
Agent

Morton RE


 rentals@morton.com.au

morton.com.au

BUILDING
ONE J



Disclaimer: This floorplan, including treatment to balcony or courtyard, is indicative only and subject to change without notice. Any dimensions and areas shown may be varied subject to detailed design and authority requirements. Areas are measured from internal face of walls and from centreline of windows.

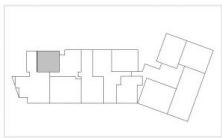
ONE
THE WATERFRONT

APARTMENT
13082

LOT
75

2 Bed

INTERNAL 83m²
EXTERNAL 10m²
TOTAL 93m²



BUILDING ONE J LEVEL 13 & 15

1300 865 465

onethewaterfront.com.au

PIETYTHP