



morton.

Little Bay 2/1 Flemming Street

1 1 1

Live in the transformed Prince Henry redevelopment at Little Bay, located opposite peaceful parklands and neighboring bushlands. Only a few minute's walk from Little Bay beach is Coastal Quarter, this distinctive building stylishly brings together the rich art-deco designs and classic elegance of the past with contemporary new spaces and stunning timeless finishes.

- Wool carpet in bedroom and tiles in dining and kitchen areas
- Generous balcony ideal for entertaining or taking in the view
- Kitchen features AEG appliances and stone bench tops
- Internal laundry includes Fisher & Paykel dryer and laundry tub
- Stainless Steel Electrolux fridge and washer dryer combo included

View

As advertised or by appointment

Agent

Sarah Fowell

0437 492 129

sarah@morton.com.au

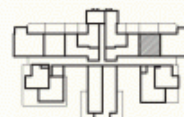
morton.com.au



COASTAL QUARTER
B-G02
PRINCE HENRY AT LITTLE BAY

Bedrooms	1 + Media
Bathrooms	1
Basement Parking	1

Internal Area	55 sqm
External Area	27 sqm
TOTAL AREA	82 sqm



Contact
(02) 9256 5968
www.princehenrylittlebay.com.au



Prince Henry
AT LITTLE BAY

A BROOKFIELD
RESIDENTIAL PROPERTY

Disclaimer: Whilst the information on this panel has been carefully compiled and is correct at the time of publication (May 2013), the information and illustrations are indicative only and may be subject to change. Brookfield Residential Properties, companies related to it and its agents do not warrant the accuracy of the information or illustrations and do not accept any liability for any error or discrepancy in that information. Interested parties should under take independent inquiries and investigations to satisfy themselves that any details herein are true and correct. The information and illustrations displayed on this panel will not form part of any contract of sale.

