



morton.

Pyrmont 103/32 Refinery Drive

🛏 3 🚗 2 🚗 2

Breathtakingly spacious and prestigiously positioned on the harbour's edge, this flawless dual level residence is an offering of unquestionable appeal. With a garden area that flows over approximately 80sqm, the impeccable interiors open to a sunny northern aspect and sparkling views across the water.

- Stunning gardens include level lawn and BBQ terrace
- With direct access to manicured common parklands
- Vistas stretch across the water to the Balmain peninsula
- Intuitively designed for seamless in/outdoor entertaining
- Spacious double bedrooms, master comes with ensuite
- Gourmet kitchen, CaesarStone benches, gas appliances
- Storage cage, ducted air con, pool, spa, gym, security
- Resort facilities include 2 pools, gyms and 2 tennis courts

View

As advertised or by appointment

Agents

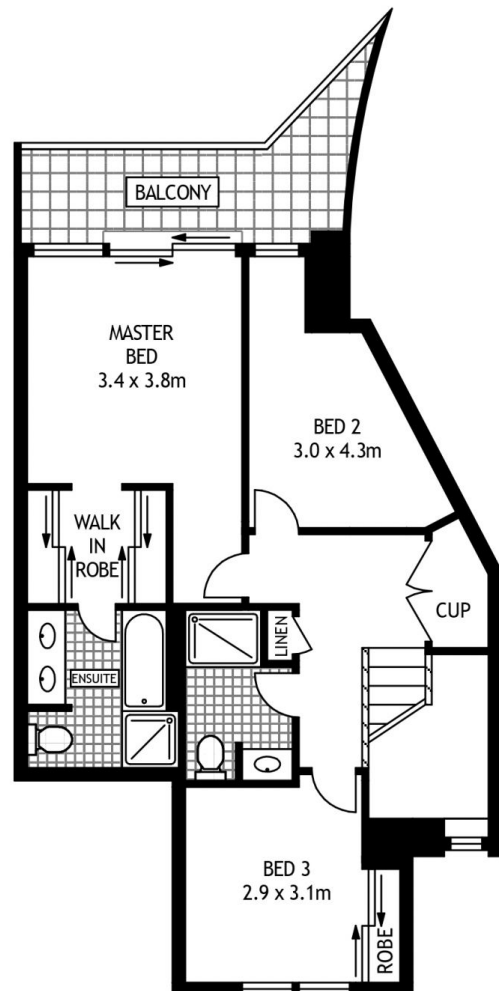
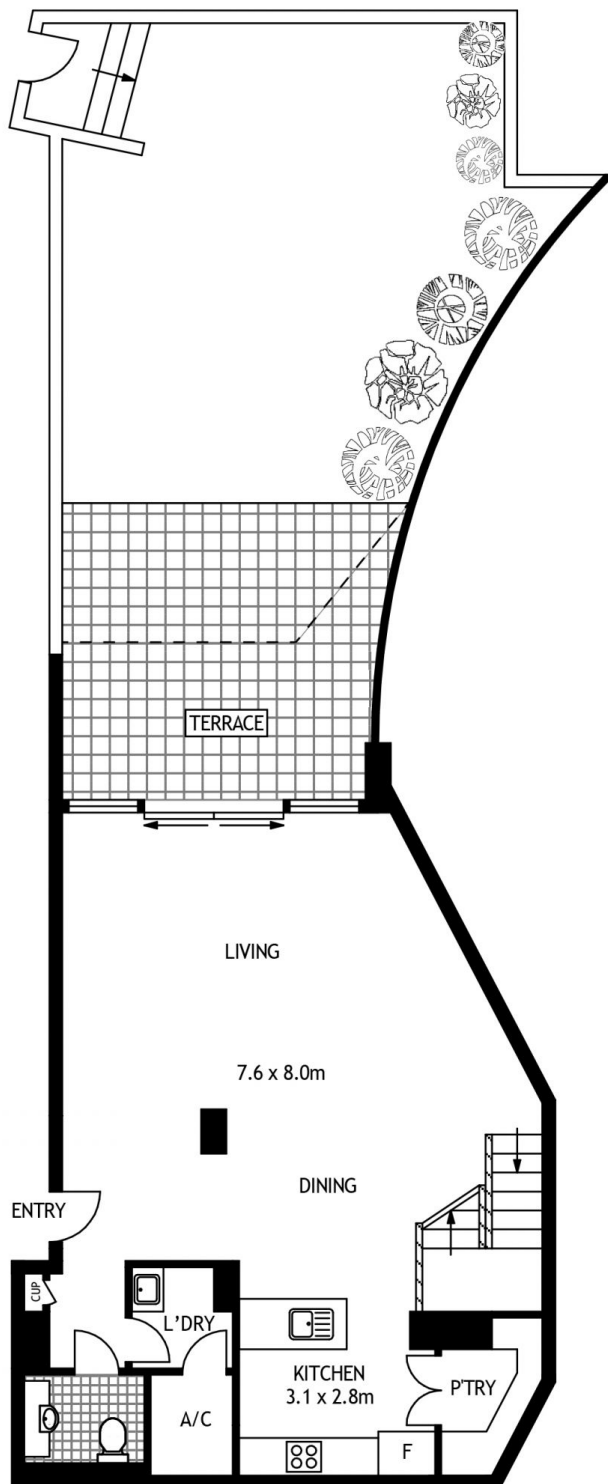
Ian Qiu

📞 0447 696 425
✉ ian@morton.com.au

Natasha Giannone

📞 0438 683 859
✉ natasha@morton.com.au

morton.com.au



103/24-32 REFINERY DRIVE

PYRMONT

SCAPE Floor Planing Disclaimer: This floor plan is conceptual only. It is provided for illustrative purposes only and should not be relied upon. We make no guarantees to the correctness of this plan. All interested parties should make and rely on their own enquiries in determining the accuracy of the information contained in this floor plan.