



morton.

Wentworth Point 206/1 Burroway Road

2 2 1

Jewel is the new and iconic gateway that connects the Sydney Harbour to Wentworth Point. Ideally positioned at the northern tip of the peninsular, Jewel is opposite to the ferry wharf, bus stops and rests above the Pierside retail precinct that includes restaurants, health care and beauty.

Apartment features:

- Entertainers gas kitchen with stone/Corian benchtops, soft closing cupboards
- LED lighting, split system reverse cycle air conditioning
- Open living and dining with timber look ceramic tiles
- Lounge room with gas point and MATV and payTV points
- Internal laundry with dryer, audio intercom with security and lift access
- Large covered balcony overlooking the community courtyard
- Basement secure parking, some with a storage cage
- On-site building manager, common landscaped courtyard

View

As advertised or by appointment

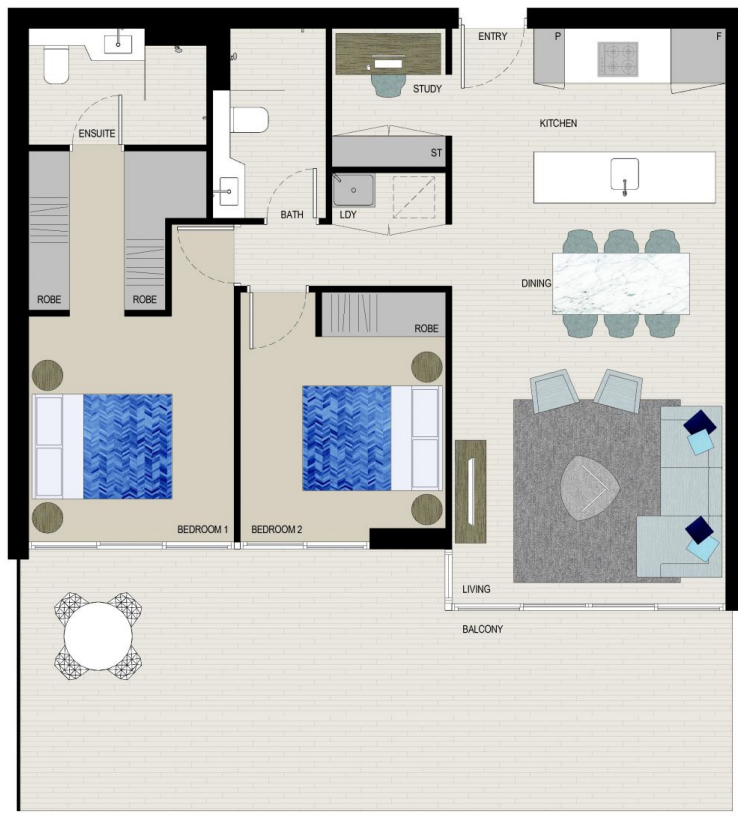
Agent

Morton



info@morton.com.au

morton.com.au



JOINTLY DEVELOPED BY



Disclaimer: This floor plan has been prepared for marketing purposes only. All descriptions, dimensions, depictions and other details in this floor plan may not be to scale and may vary from the property as built. Your attention is drawn to the special conditions of the contract for sale of land. No third party has any authority to make or give any representation or warranty in relation to the property unless the representation or warranty is confirmed by Payce Communities, Wentworth Point Pty Ltd, or FWT Development Pty Ltd and included in the contract for sale of land. SCDA Disclaimer: In this disclaimer Developer means Payce Communities Wentworth Point Pty Ltd ACN 60 420 748 and SA FWT Development Pty Ltd ACN 64 38 145. Development means the retail and residential development at Burroway Road Wentworth Point known as Jewel. SCDA means Sydney Olympic Park Authority a statutory body constituted under the Sydney Olympic Park Authority Act 2005 (NSW). The Developer is responsible for all matters in connection with undertaking and completing all of the works required to be performed or carried out to complete the Development and SCDA has no responsibility or involvement in those matters.

(Rev C_01.06.15)

SALES BY



JEWEL
WENTWORTH POINT

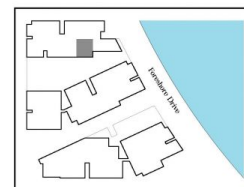
APARTMENT

206

LOT 6

2BED + STUDY

Internal	79 sqm
External	36 sqm
Total	115 sqm



LEVEL 2

JEWEL DISPLAY CENTRE

1 Burroway Road, Wentworth Point 2127

♦ 1300 888 778 ♦ jewelresidences.com.au