



# morton.

**Riverwood** 520/7 Washington Avenue

🛏 2 🛏 2 🚗 1

Located in the new urban hub of Washington Park, Como offers lifestyle apartment living within the masterplanned community. With easy access to the M5 and only 20kms to the CBD. This apartment is 7 months old. It remains as new condition.

#### APARTMENT FEATURES

- Reverse cycle air conditioning
- Stainless steel kitchen appliances
- Stone bench tops, mirror splash backs
- LED under cupboard lighting
- Wool carpets, efficient LED down lights
- Data/TV points in living and main bedroom
- Recessed mirrored cabinets in bathroom
- Security building, video intercom

#### View

As advertised or by appointment

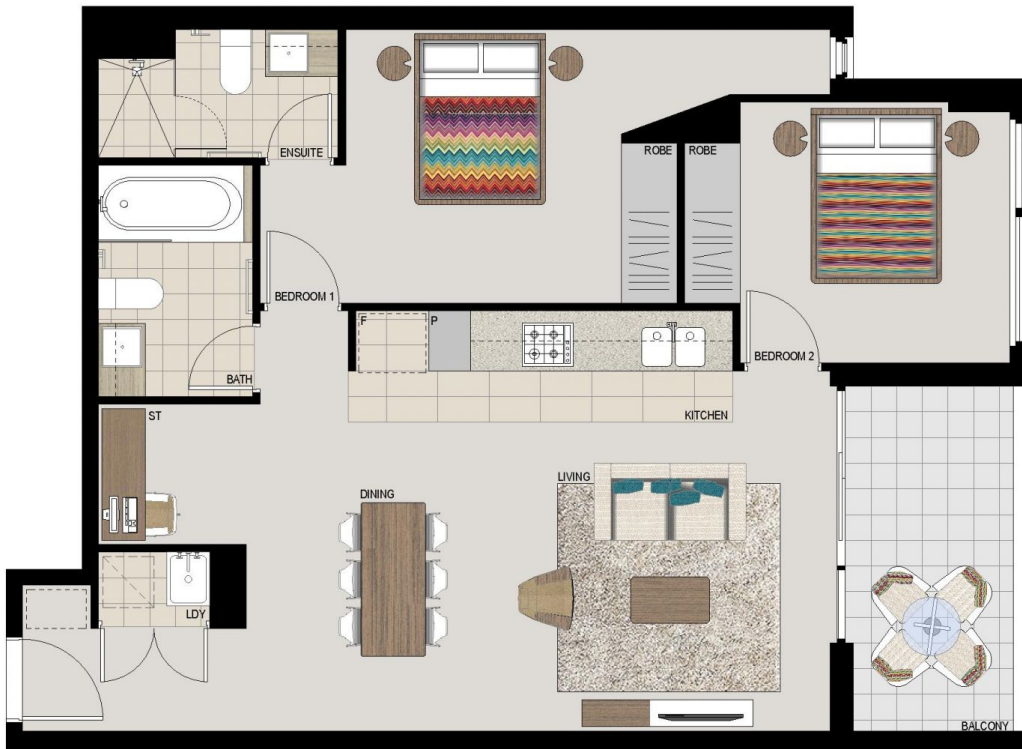
#### Agent

**Lisa Xi**

📞 0401 311 667

✉ lisa@morton.com.au

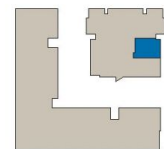
**morton.com.au**



# **APARTMENT 520** **LOT 185** **2BED + STUDY**

Internal	77sqm
External	7sqm
<b>Total</b>	<b>84sqm</b>

**COMO**



**1300 111 088**  
[www.washingtonpark.com.au](http://www.washingtonpark.com.au)

Proudly developed by  
**PAYCE**

Disclaimer: This floor plan has been prepared for marketing purposes only. All descriptions, dimensions, depictions and other details in this floor plan may not be to scale and may vary from the property as built. Your attention is drawn to the special conditions of the contract for sale of land. No third party has any authority to make or give any representation or warranty in relation to the property unless the representation or warranty is confirmed by Payce Communities No.1 Pty Limited and included in the contract for sale of land. [Rev A 13.05.13]

**We are**  
**Washington Park.**