



morton.

Pyrmont 18E/5 Tambua Street

 3  2  2

With respect to the government's easing of restrictions around open homes but in a continuing effort to help stop the spread of COVID-19, we will conduct our scheduled open homes with social distancing and hygiene protocols in place, as well as continue to offer private appointments for those who prefer that method.

Please contact the listing agent for more information.

A unique opportunity to acquire this exclusive sub penthouse apartment located on Pyrmont's prized northern peninsula. With uninterrupted views over Johnson's Bay, Anzac Bridge and Balmain, this residence has the finest of finishes including high ceilings, an intuitive floor plan and magnificent views.

- Large living opens to balcony with views of Johnson's Bay
- State of the art kitchen with European stainless steel appliances
- Equally spacious bedrooms on opposite side to living also with views
- Master with walk-in wardrobes to designer en-suite with b/tub

morton.com.au

View

As advertised or by appointment

Agents

Ian Qiu

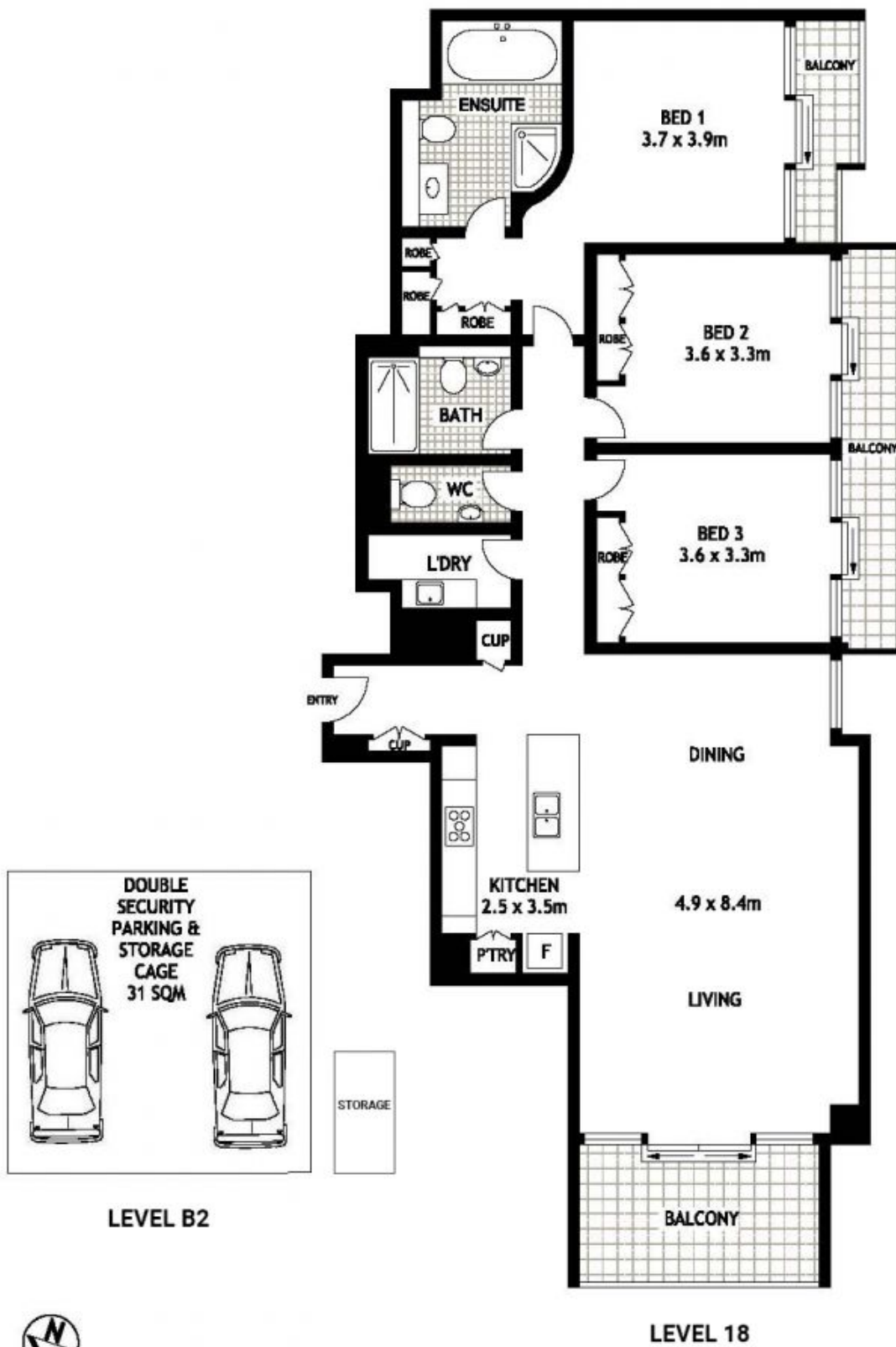
 0447 696 425

 ian@morton.com.au

Natasha Giannone

 0438 683 859

 natasha@morton.com.au



18E/5 Tambua Street, Pyrmont

SCAPE Floor Planning Disclaimer: This floor plan is conceptual only. It is provided for illustrative purposes only and should not be relied upon. We make no guarantees to the correctness of this plan. All interested parties should make and rely on their own enquiries in determining the accuracy of the information contained in this floor plan.