



morton.

Pyrmont 212/1 Wattle Crescent

2
 2
 1

Occupying a premier position in 'Pier 99', this exceptional residence defines affordable luxury living without compromise. Finished to the most exacting of standards with a superior attention to detail, it is literally moments to the sparkling waters of Blackwattle Bay.

- Designer living with an understated modern aesthetic
- With an ideal separation of night and daytime spaces
- Combined lounge and dining area flows to balcony
- Double bedrooms, built-in robes, master has ensuite
- Sleek kitchen, stone benches, Miele gas appliances
- Timber floors, high ceilings, study alcove, ducted air
- Secure parking, internal laundry and a storage cage
- Building was completed in 2017

View

As advertised or by appointment

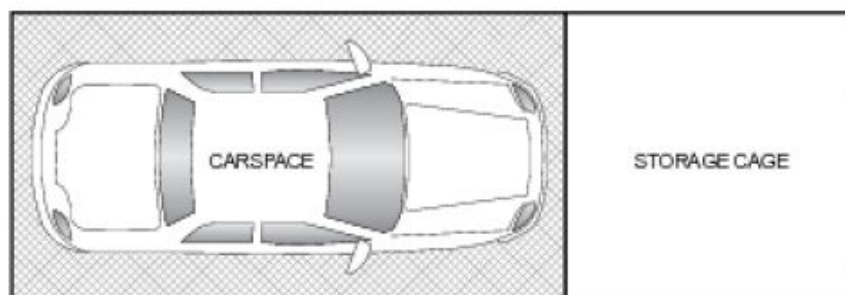
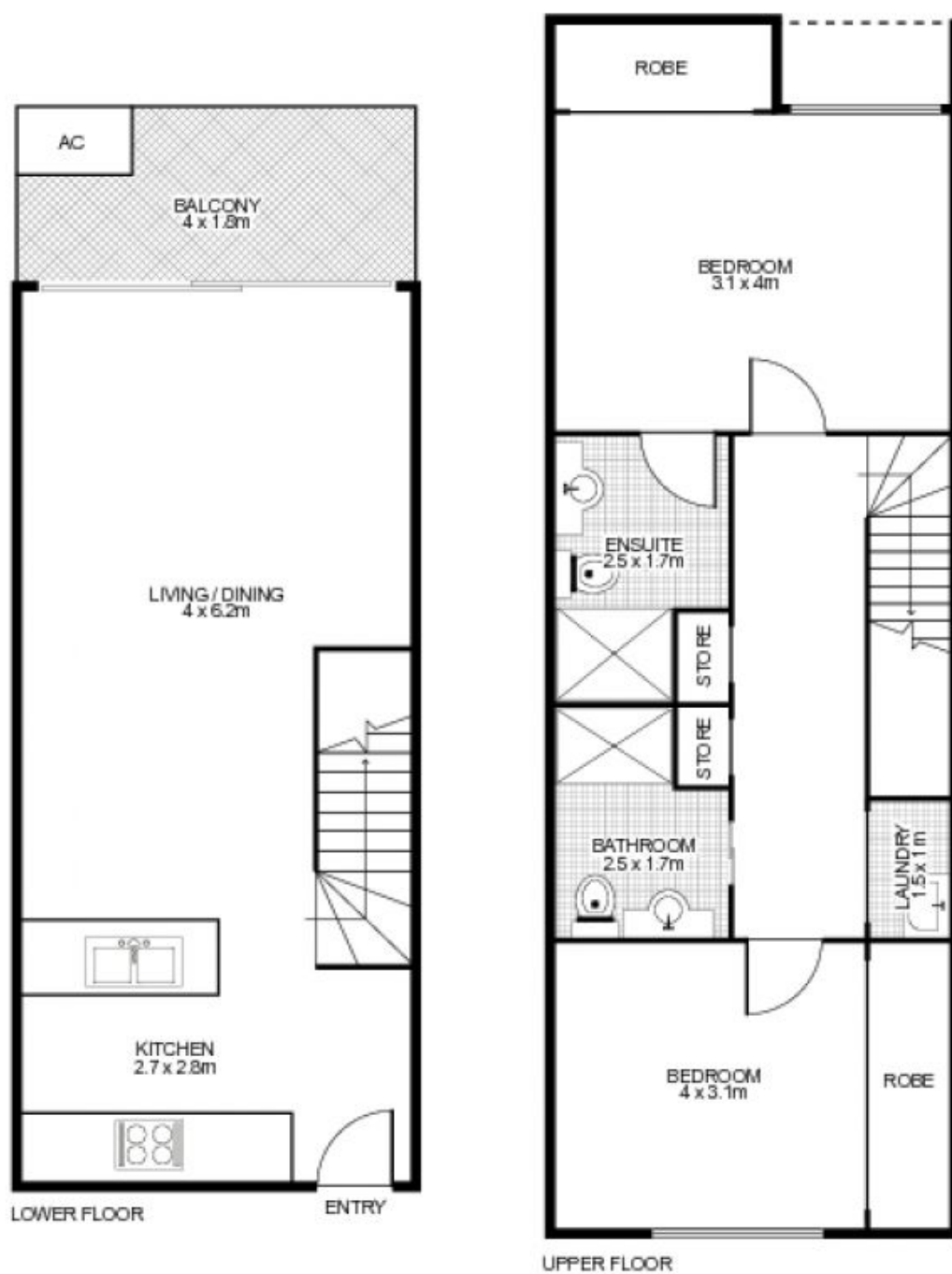
Agent

James Crow

0410 593 057

james@morton.com.au

morton.com.au



212/1 Wattle Crescent, PYRMONT



This floor plan is intended as a guide only. Layout dimensions are approximate only. No representations or warranties of any nature whatsoever are given or intended. Any person using this information should rely on their own enquiries. Floor Plans by SURROUNDPIX.