



morton.

Ermington 321/24-32 Koorine Street

 2  2  1

Located in the new urban hub of Royal Shores, Sirocco offers lifestyle apartment living within the masterplanned community in Ermington. Perched on the waters edge, Sirocco offers easy access to the river, cycleway and parks.

APARTMENT FEATURES

- Reverse cycle air conditioning
- Stainless steel kitchen appliances
- Stone bench tops, mirror splash backs
- LED under cupboard lighting
- Wool blend carpets, efficient LED down lights
- Data/TV points in living and main bedroom
- Recessed mirrored cabinets in bathroom
- Security building, video intercom
- One car space and one storage cage

NEIGHBORHOOD FACILITIES

- Woolworths, Liquorland, Bakery 900m away
- Local bus routes (523, 524, 525 600m-1.5km away)
- West Ryde Railway station 4.2kms away


morton.com.au


View

As advertised or by appointment

Agent

Dylan Choe

 0416 932 977

 dylanchoe@morton.com.au

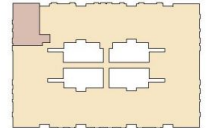


SIROCCO II

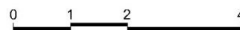
**APARTMENT 321
LOT 94**

2 BEDROOM

Internal	84 sqm
External	7 sqm
Total	91 sqm



SIROCCO II - LEVEL 3



Disclaimer: This floor plan has been prepared for marketing purposes only. All descriptions, dimensions, depictions and other details in this floor plan may not be to scale and may vary from the property as built. Your attention is drawn to the special conditions of the contract for sale of land. No third party has any authority to make or give any representation or warranty in relation to the property unless the representation or warranty is confirmed by the vendors and included in the contract for sale of land. Date Issued: 05/12/14 Revision: C