



morton.

Jordan Springs 6 Matcham Street

5 2 2

Built without compromise by master builder G J Gardiner Homes, this ex-display home is genuinely located in the heart of Watgum estate. This superb family home is perfect for entertaining and the pinnacle of contemporary architecture. Immaculately presented expansive 5-bedroom home has everything that the executive or growing family could want. Quality personified with no expense spared.

View

As advertised or by appointment

Agent

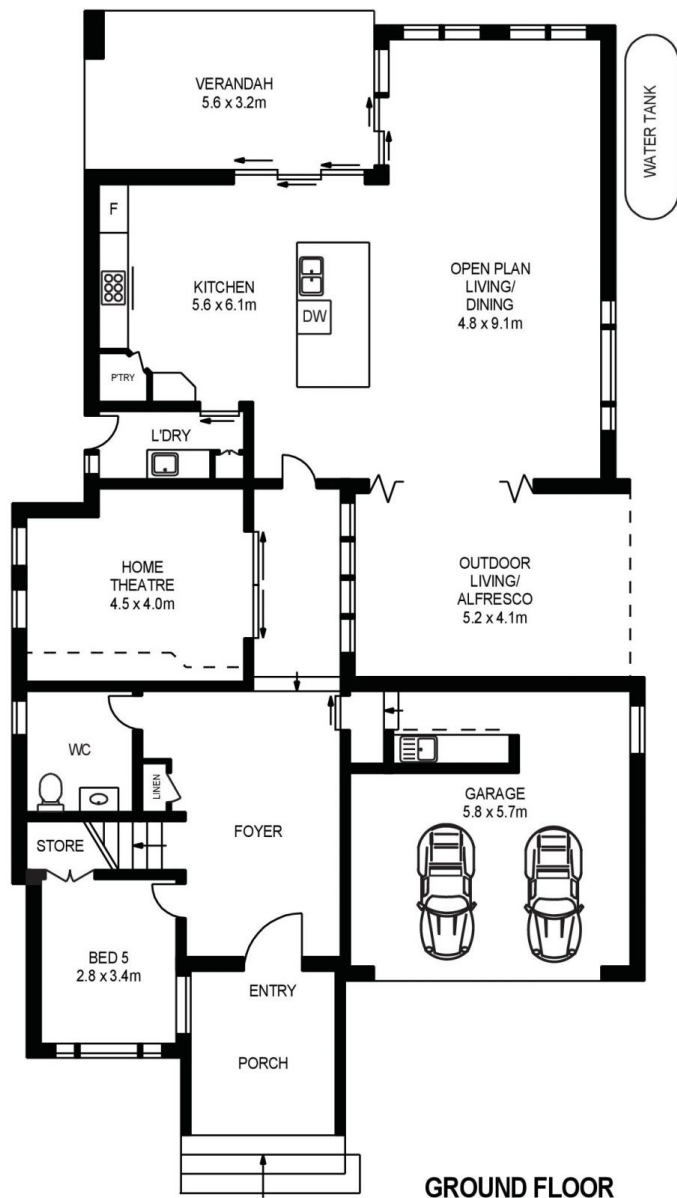
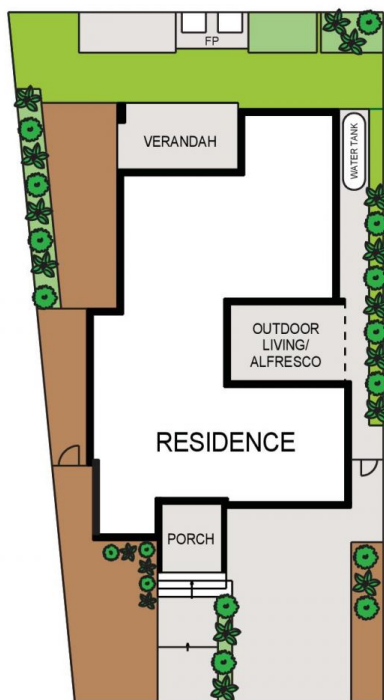
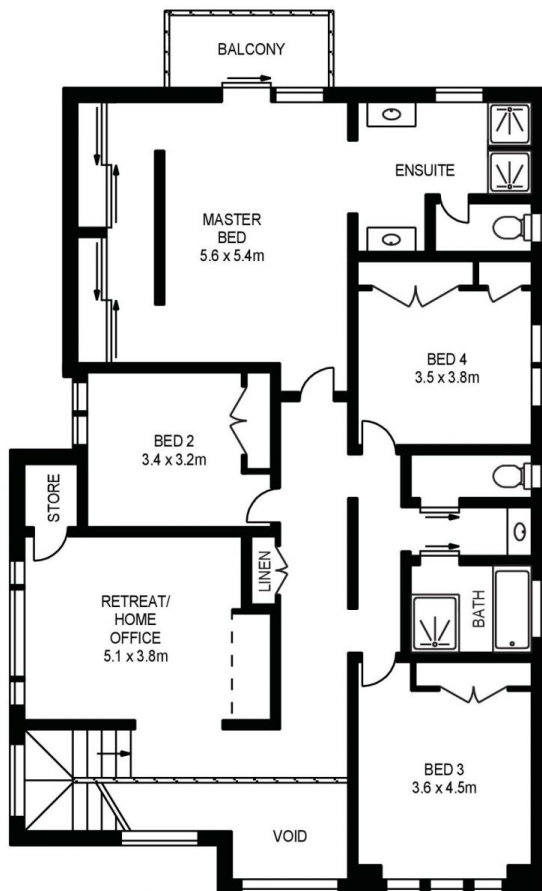
Ian Ahearn

0457 483 610

ian.ahearn@morton.com.au

- Grand entry door with high ceilings and void areas in foyer
- Practical floor plan boasting large living areas
- Four spacious bedrooms with built in robes, the fifth bedroom can be easily converted to a study/office
- Master bedroom with ensuite and private balcony
- Large ultra modern kitchen with granite benchtop and splashback and walk in pantry
- Enjoy movies in the comfort of your own cinema room complete with surround sound
- Versatile additional large living space upstairs
- Two all-purpose outdoor alfresco entertaining areas
- Double garage includes a small kitchenette, ample storage

morton.com.au



6 MATCHAM STREET, JORDAN SPRINGS

