



morton.

Zetland 501/2 Victoria Park Parade

 2  2  1

With respect to the government's restrictions around open homes and to help stop the spread of COVID-19, our properties can be viewed by appointment only. Please contact the listing agent for more information.

Wonderfully positioned in the bustling new precinct in Victoria Park, the 'Stella' apartments is providing a new level of living. 'Stella' is superbly designed by Tzannes Associates to maximise light, open spaces and cross-flow ventilation.

- Floating timber floors throughout
- Kitchens include CaesarStone bench tops and Miele appliances
- Polyurethane finish joinery with ample storage
- Bathrooms with Italian fittings, and
- Feature wall tiles and mirrored storage cabinets
- Includes caged storage and video intercom

View

As advertised or by appointment

Agent

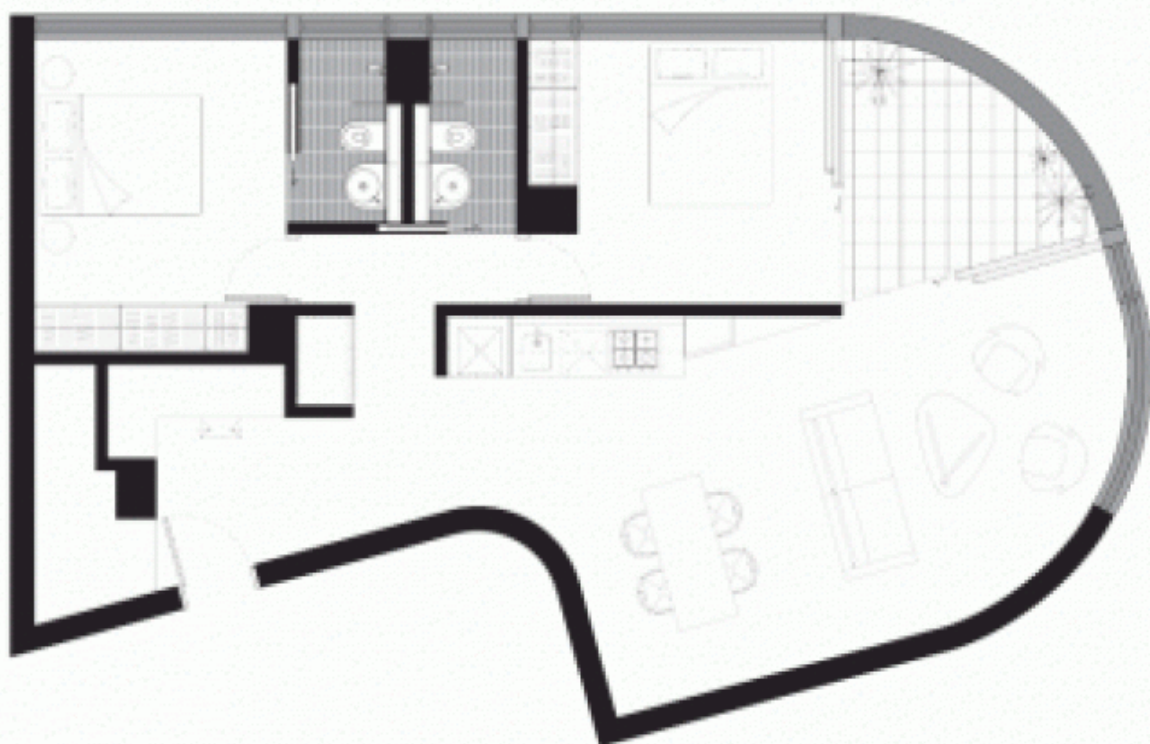
Sarah Fowell

 0437 492 129

 sarah@morton.com.au

morton.com.au

STELLA



#501
2 BED - LEVEL 5

86 m²



79 sqm internal + 7 sqm balcony