



# morton.

**Sydney** 702/4 Bridge Street

2 1

## View

As advertised or by appointment

## Agent

**Ettiene West**

0410 593 749

ettiene@morton.com.au

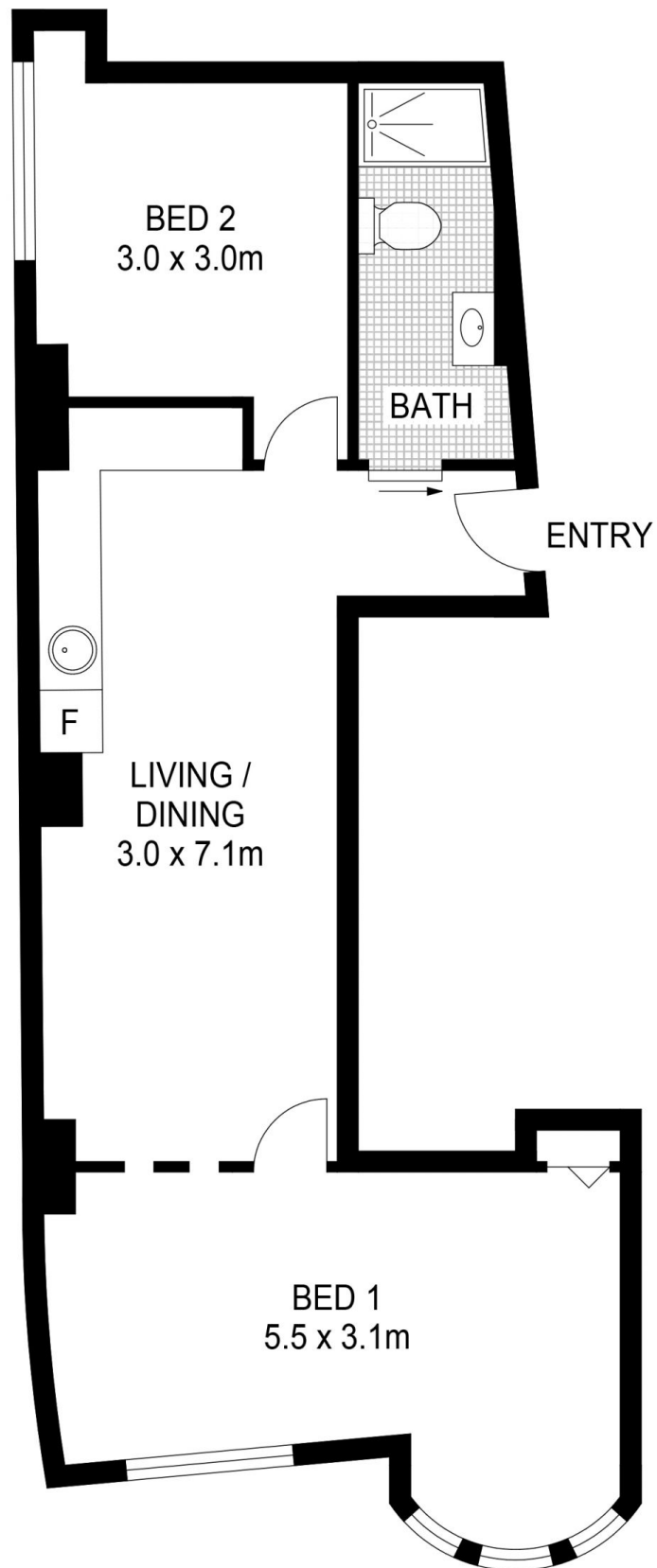
With respect to the government's easing of restrictions around open homes but in a continuing effort to help stop the spread of COVID-19, we will conduct our scheduled open homes with social distancing and hygiene protocols in place, as well as continue to offer private appointments for those who prefer that method.

Please contact the listing agent for more information.

With the benefit of residential and commercial use, this immaculately presented apartment is perfectly suited for easy-care living, inner city business space, secure pied-a-terre or solid investment. With a beautiful heritage façade, the striking Cliveden is positioned in the prestigious northern end of the CBD. Meters from George Street, enjoy effortless access to the new light rail, Circular Quay Train and Ferry terminals as well as the financial district of Sydney CBD.

Spacious bathroom with internal laundry  
Soaring ceilings and travertine flooring throughout  
Enjoy Open Plan living and Dining

**morton.com.au**



PLANS SHOWN ONLY INDICATIVE OF LAYOUT. DIMENSIONS ARE APPROXIMATE.



**SYDNEY** 702/4 Bridge Street

**morton.**