



morton.

Zetland 2303/15 Gadigal Avenue

 2  2  2

A superb penthouse lifestyle is on offer in the exclusive Ruby Tower with this impeccably finished top floor apartment. This impressive two-bedroom residence is the perfect sanctuary for those who demand lifestyle convenience and are seeking a sophisticated entertainers' retreat with impressive proportions, a light filled layout and top-of-the-world views that stretch over the city, surrounding park lands and around to Botany Bay.

- Floor-to-ceiling walls of glass that showcase 270° views
- Light filled open plan design with living and dining areas
- Winter garden balcony and a stunning city backdrop
- Sleek designer kitchen with island bench and Euro fittings
- Two double bedrooms both have built-in wardrobes
- Two security car spaces plus a separate storage cage
- Ducted air conditioning, full bathroom, internal laundry

This designer property is perfectly positioned to enjoy the best that this Victoria Park location has to offer with East Village shopping and eateries, local parks and bus transport virtually at the doorstep. It also provides easy access to Green Square

morton.com.au

View

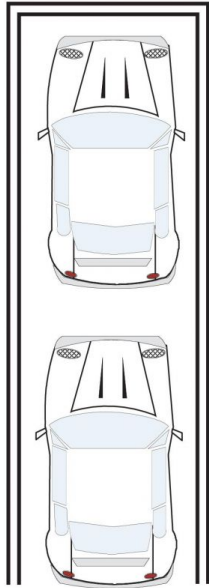
As advertised or by appointment

Agent

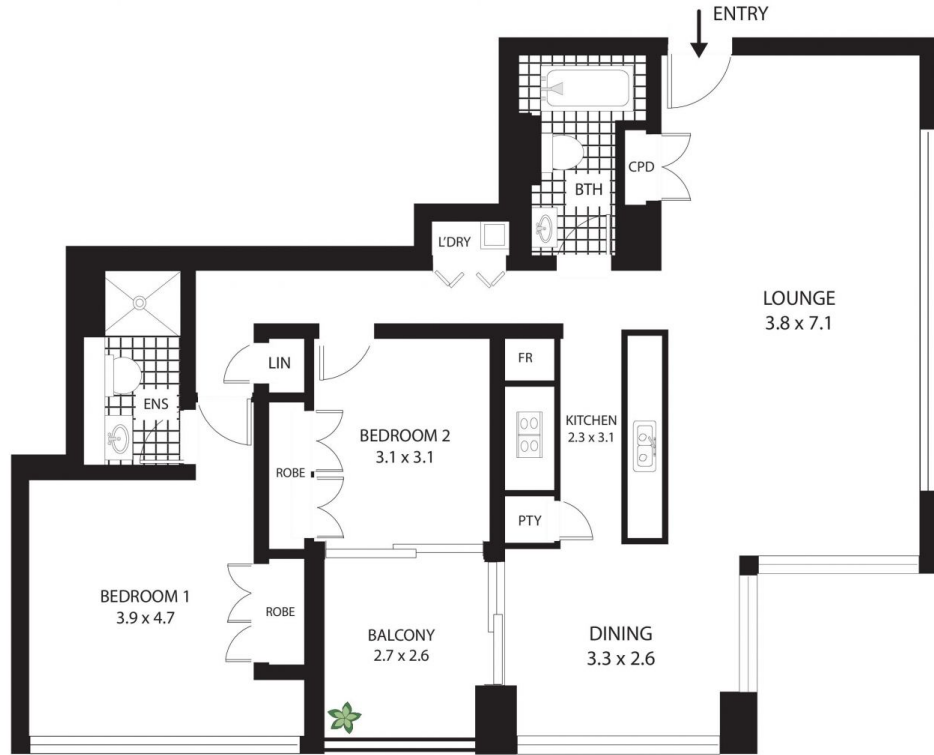
Calvin Chan

 0406 888 028

 calvin@morton.com.au



TANDEM PARKING
PLUS
ADDITIONAL STORAGE CAGE



2303/15 Gadigal Ave, Zetland

All measurements are approximate only. Plan is provided as an indication of layout



SCALE