



morton.

Wentworth Point 145/5 Baywater Drive

1 1 1

With respect to the government's easing of restrictions around open homes but in a continuing effort to help stop the spread of COVID-19, we will conduct our scheduled open homes with social distancing and hygiene protocols in place, as well as continue to offer private appointments for those who prefer that method.

Please contact the listing agent for more information.

View

As advertised or by appointment

Agent

Dylan Choe

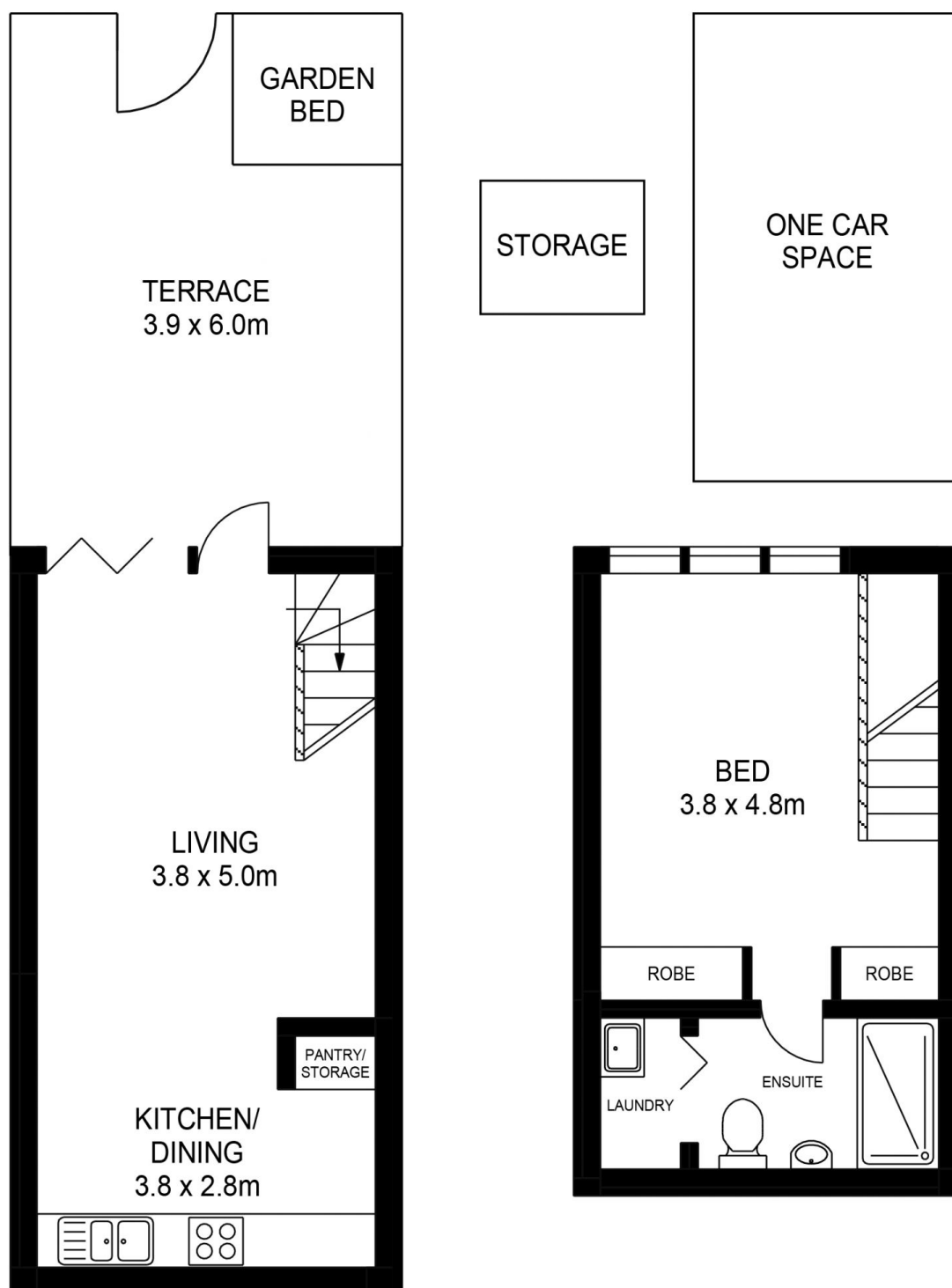
0416 932 977

dylanchoe@morton.com.au

Offering a modern blend of fresh design, stylish finishes and easy in/outdoor living, this loft-style courtyard apartment is a light filled haven in a premium waterside community. It has been well-designed to embrace low maintenance living and entertaining, plus it provides a very peaceful retreat with a range of shopping, cafes, parks and transport options at your fingertips.

- Own street entrance via a private entertainment courtyard
- Bright and airy open layout with lounge and dining spaces
- Contemporary kitchen equipped with sleek gas fittings

morton.com.au



145/5 BAYWATER DRIVE, WENTWORTH POINT



ASSET
PHOTOGRAPHERS

www.assetphotographers.com.au

Please note these measurements are approximate only. The plans are intended as a rough guide for illustrative purposes. It is not warranted or guaranteed to be correct nor is it a part of the sale or rental contract.

