



morton.

Riverwood 525/7 Washington Avenue

🛏 2 🚿 2 🚗 1

With respect to the latest government's COVID-19 restrictions we will be conducting open homes and private appointments with mandatory face masks, sanitisation, QR code check ins, and 1 person per 4sqm. Please submit an enquiry or contact the agent to be kept up to date with inspection times and register your attendance for viewings.

Located in the new urban hub of Washington Park, Como offers lifestyle apartment living within the masterplanned community. With easy access to the M5 and only 20kms to the CBD.

APARTMENT FEATURES

- Reverse cycle air conditioning
- Stainless steel kitchen appliances
- Stone bench tops, mirror splash backs
- LED under cupboard lighting
- Wool carpets, efficient LED down lights
- Data/TV points in living and main bedroom
- Recessed mirrored cabinets in bathroom

morton.com.au

View

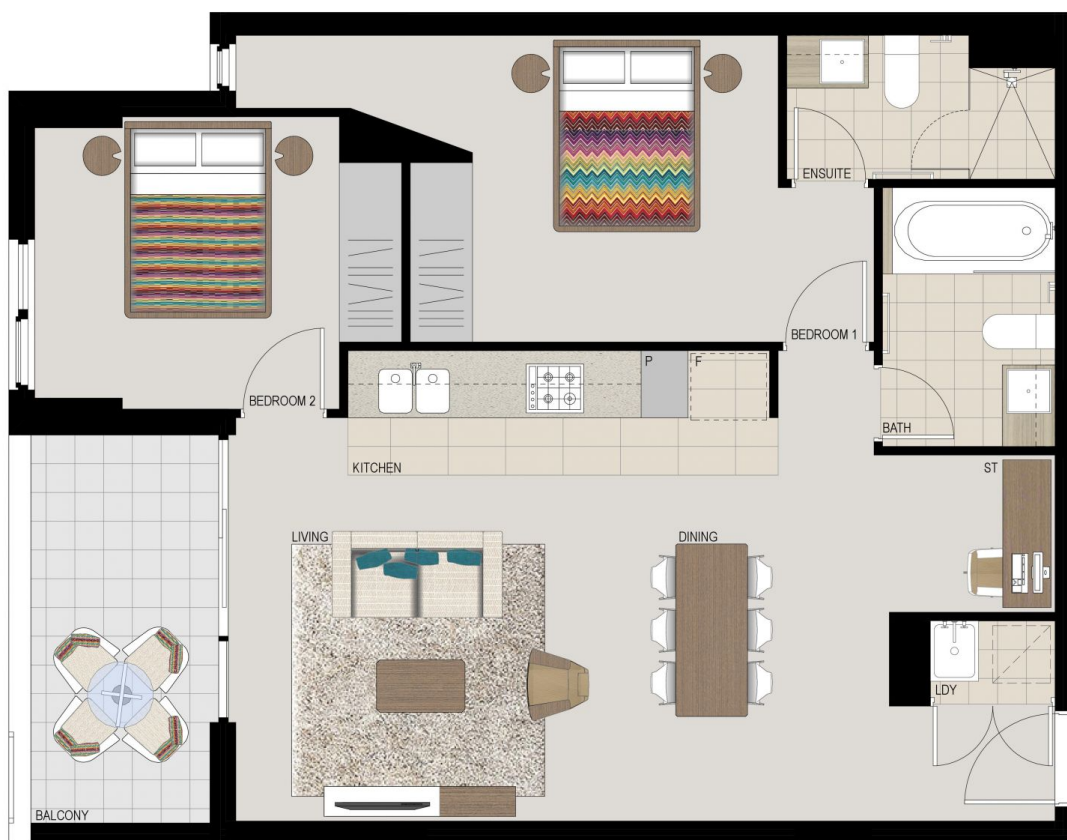
As advertised or by appointment

Agent

Lisa Xi

📞 0401 311 667

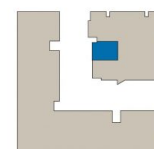
✉ lisa@morton.com.au



APARTMENT 525 **LOT 189** **2BED + STUDY**

Internal	75sqm
External	7sqm
Total	82sqm

COMO



1300 111 088
www.washingtonpark.com.au

Proudly developed by
PAYCE

Disclaimer: This floor plan has been prepared for marketing purposes only. All descriptions, dimensions, depictions and other details in this floor plan may not be to scale and may vary from the property as built. Your attention is drawn to the special conditions of the contract for sale of land. No third party has any authority to make or give any representation or warranty in relation to the property unless the representation or warranty is confirmed by Payce Communities No.1 Pty Limited and included in the contract for sale of land. [Rev A 13.05.13]

We are
Washington Park.