



morton.

Sydney 512/45 Shelley Street

🛏 2 🚿 2 🚗 1

With respect to the government's restrictions around open homes and to help stop the spread of COVID-19, our properties will be open by appointment only. Please contact the listing agent for more information

Perched on the 5th floor of the ever popular King Street Wharf, is this spacious apartment. Consisting of a very desirable floor plan with quality finishes and ample space, has an air of modernity and style. Ideal for anyone wanting to reside in an ultra convenient location.

- Situated in a secure, small boutique building
- Freshly painted throughout
- Two large double bedrooms with large wardrobes
- Master with ensuite
- Open plan large lounge/dining/kitchen
- Designer kitchen, stainless steel appliances, ample storage
- Luxurious second bathroom
- Internal laundry
- Reverse cycle air conditioning.

View

As advertised or by appointment

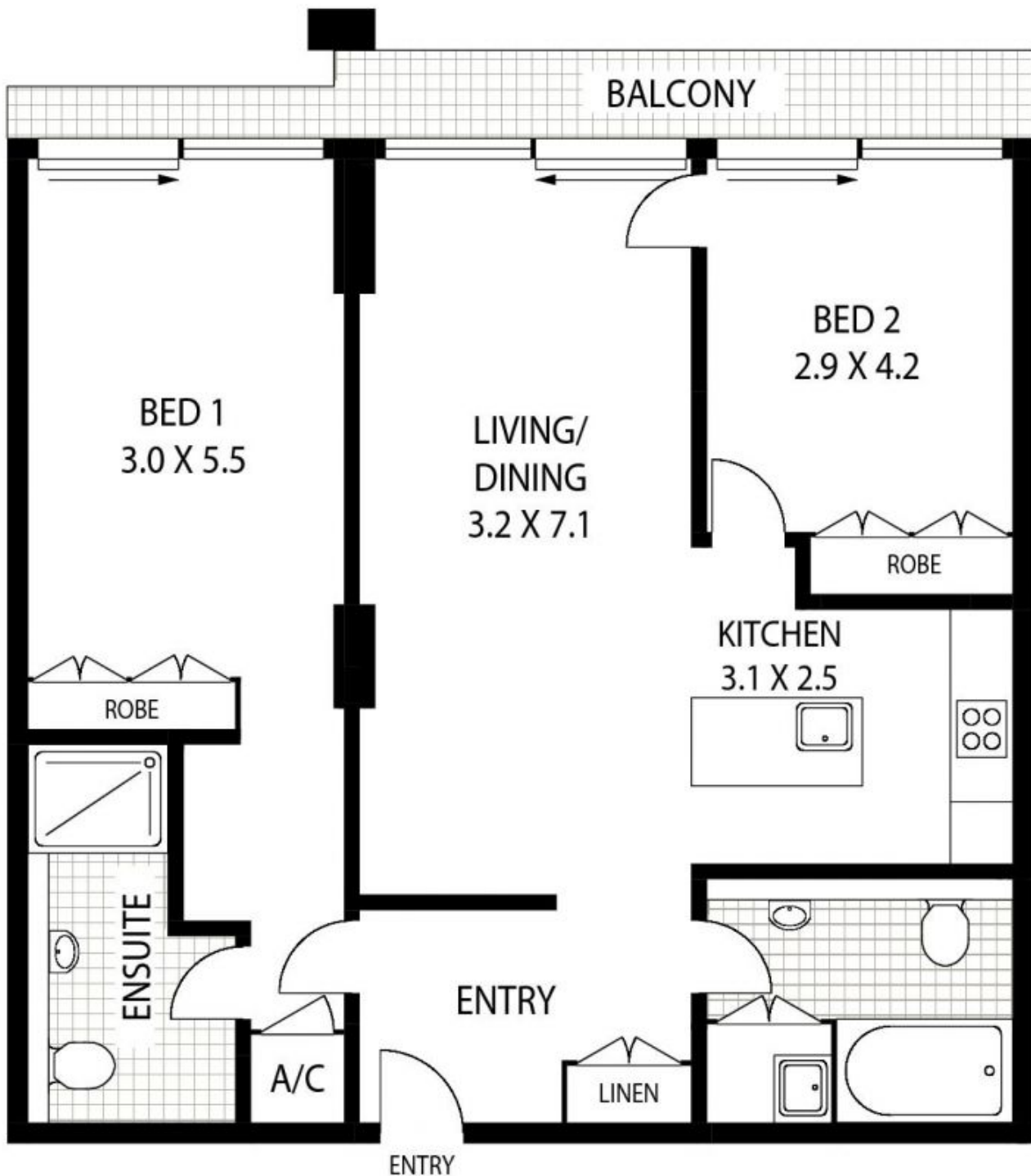
Agent

Morton



📧 info@morton.com.au

morton.com.au



NOTE :- SINGLE SECURITY PARKING

512/45 SHELLEY STREET

SYDNEY

Floor plan supplied by www.thepicturedesk.com.au. This floor plan is provided for indicative purposes only. Measurements are approximate and not to scale. The vendor, agency and supplier will accept no liability for its accuracy. Interested parties are advised to make their own independent enquiries.