



**morton.**

**Ryde** 216/23 Porter Street



A superb easy-living space that's stylishly appointed for today's living, this designer one-bedroom plus study apartment is part of Meriton's quality 'Evoke' development, just footsteps to the water's edge. It has been well-planned to complement a busy modern lifestyle and is ideal for buyers seeking secure, low-maintenance living in a great riverside location.

- Generously proportioned with a bright open plan design
- Wraparound entertainer's balcony that overlooks parkland
- Spacious bedroom with built-in plus a separate study area
- Quality modern kitchen and stainless-steel gas appliances
- Designer bathroom, internal laundry plus security entrance
- Security basement car space plus air-conditioning
- Swimming pool, spa and sauna and communal BBQ area
- An excellent investment option with good rental potential

**View**

As advertised or by appointment

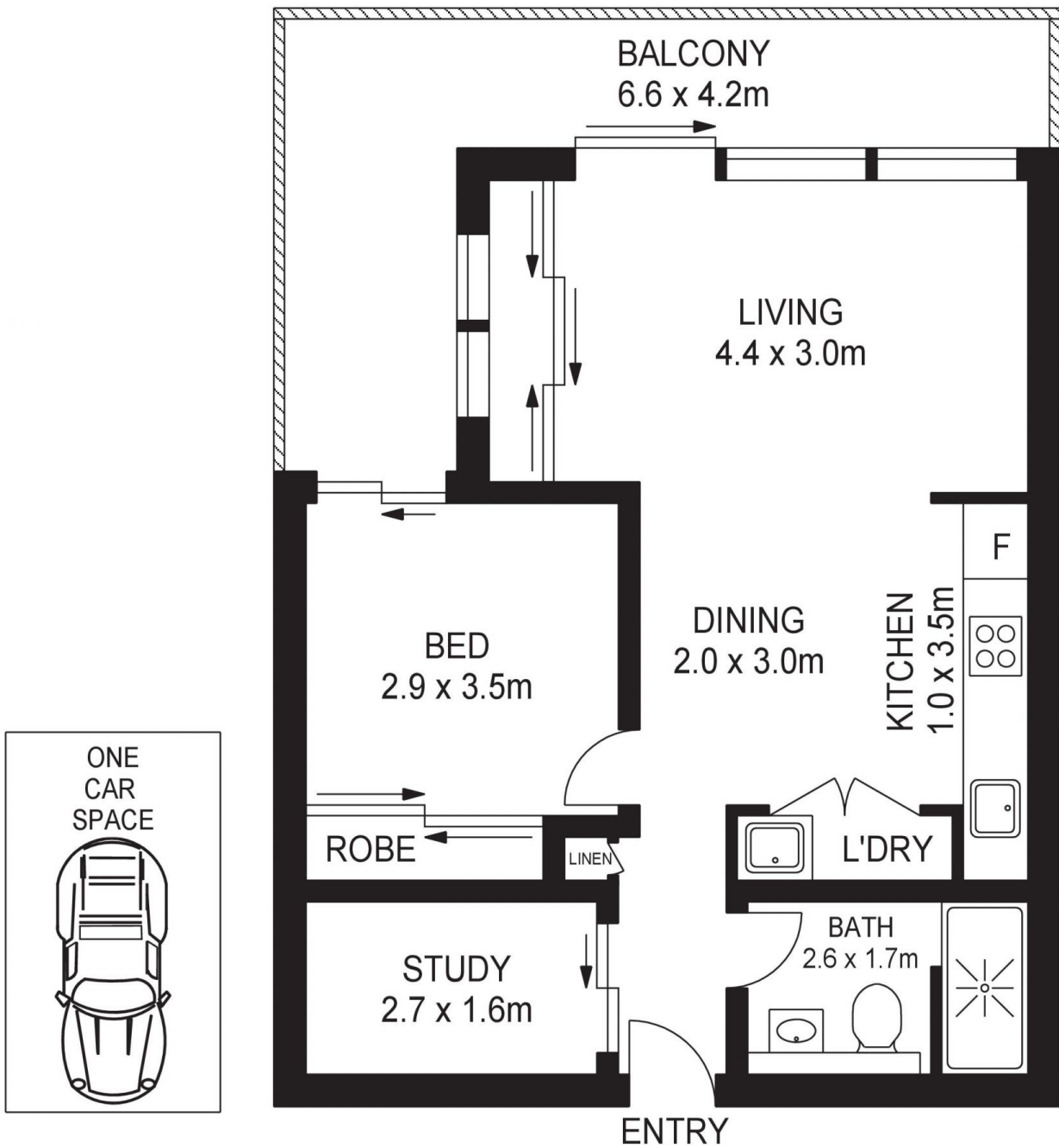
**Agent**

**Dylan Choe**

📞 0416 932 977

✉️ [dylanchoe@morton.com.au](mailto:dylanchoe@morton.com.au)

[morton.com.au](http://morton.com.au)



216/23 PORTER STREET RYDE



Please note these measurements are approximate only. The plans are intended as a rough guide for illustrative purposes. It is not warranted or guaranteed to be correct nor is it a part of the sale or rental contract.

