



morton.

Riverwood 422/5 Vermont Crescent

 2  2  1

This bright and ultra-modern apartment represents a great chance to move into Washington Park's popular 'Lakeview' building and enjoy the development's lakeside setting amid acres of park-like grounds. Instantly appealing thanks to its stylish presentation and quality design, it offers a high performing property in mint condition surrounded by all the attractions of this celebrated masterplanned community.

- A good-sized open plan layout with living and dining areas
- A wide covered balcony that overlooks landscaped gardens
- Designer stone kitchen equipped with sleek gas fittings
- Two double bedrooms with built-ins plus a separate study
- Two crisp modern bathrooms and an internal laundry
- Security car space and air conditioning
- Access to cycleways, scenic walkways, communal gardens

View

As advertised or by appointment

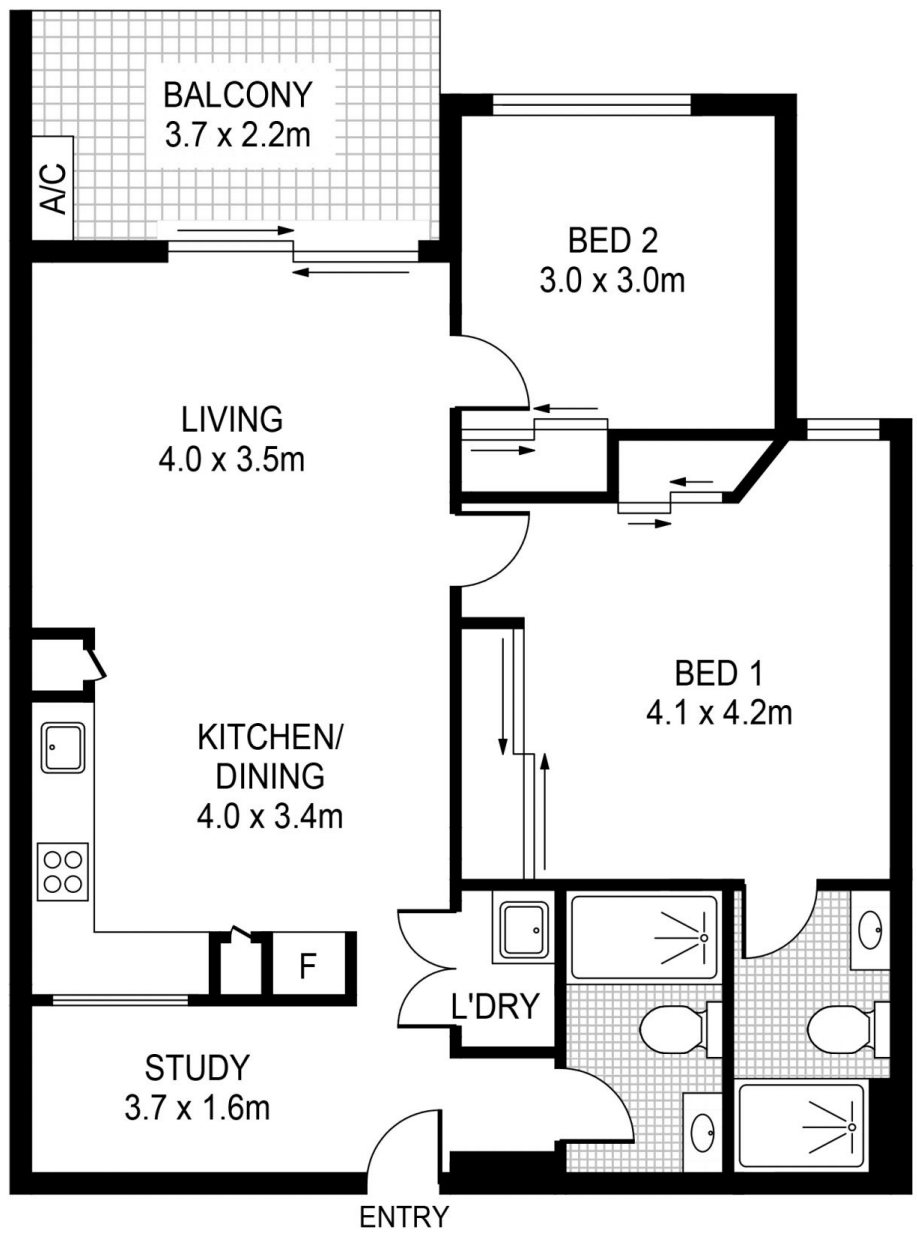
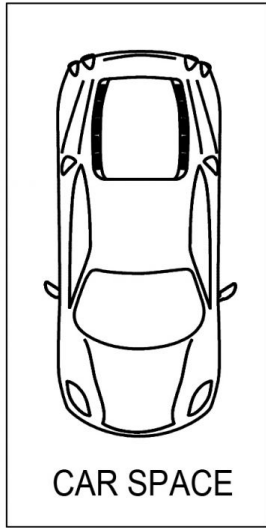
Agent

Lisa Xi

 0401 311 667

 lisa@morton.com.au

morton.com.au



422 /5 VERMONT CRES, RIVERWOOD



This floor plan including furniture, fixture measurements and dimensions are approximate and for illustrative purposes only. Image Mountain gives no guarantee, warranty or representation as to the accuracy and layout. All enquiries must be directed to the agent, vendor or party representing this floor plan.