



morton.

Pymont 201/380 Harris Street

🛏 2 🚿 2 🚗 1

View

As advertised or by appointment

Agent

James Crow

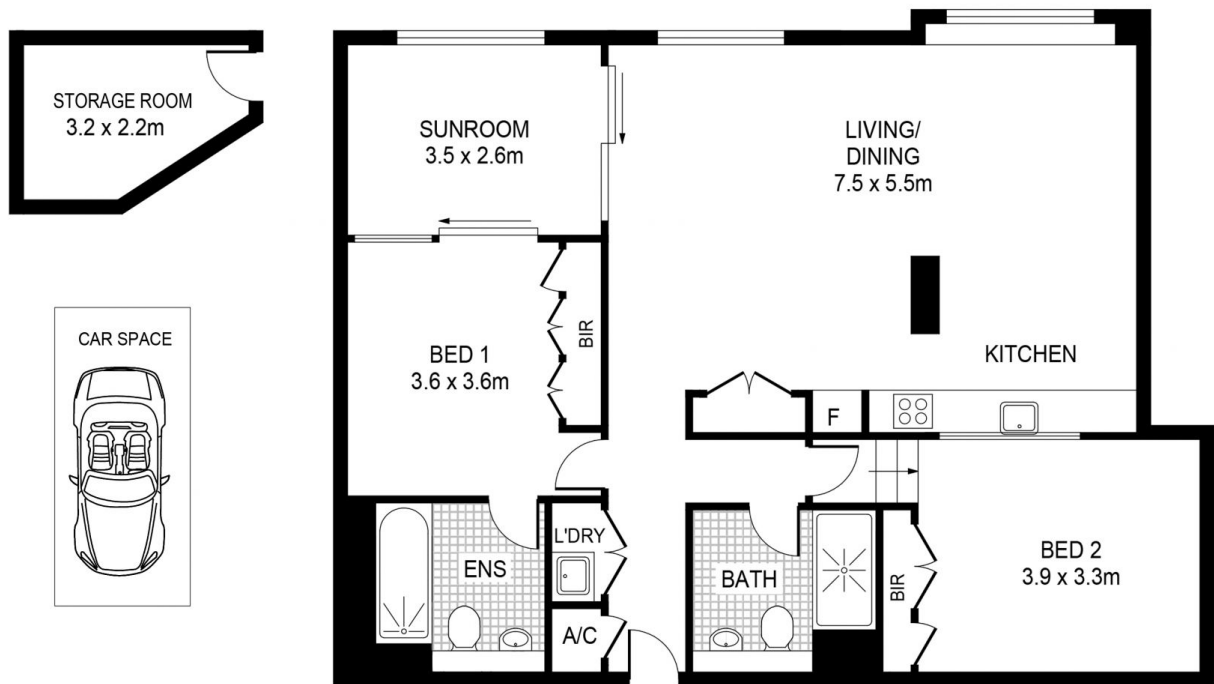
📞 0410 593 057

✉ james@morton.com.au

Soaring ceilings, double hung timber framed windows and exposed brick match high expectations in this stylish and stunningly spacious two-bedroom apartment with study situated in the historic 'M Central' warehouse conversion. Featuring a smart and easy flowing layout with bespoke finishes, great natural light and delivers exceptional space and flair in a vibrant city-fringe locale with an undercover walkway leading directly to Darling Harbour and surrounds.

- Open interiors feature a generous single level design
- Polished floors, vaulted ceilings and large windows
- Two bedrooms, built-ins plus a separate sunroom / study
- Modern granite kitchen with stainless steel fittings
- Two designer bathrooms include one with full bathtub
- Secure parking with convenient same level access
- Air conditioning, security and on site management
- Exclusive same level access to 7 sqm storage room.
- Positioned privately at northern end with one common wall
- Park-like roof garden providing a 2,800sqm urban sanctuary

morton.com.au



This floor plan including furniture, fixture measurements and dimensions are approximate and for illustrative purposes only.



PYRMONT 201/380 Harris Street

morton.