



**morton.**

**Woolloomooloo** 514/6 Cowper Wharf Roadway

🏠 1 📄 2 🚗 1

Floating on the fringe of the city, the Woolloomooloo Finger Wharf proudly emanates its own special community lifestyle. Surrounded by water and gardens in the world's longest timbered-piled wharf, this loft-style oversized one bedroom apartment with one and half bathrooms and secure parking offers endless scope. Savor the charm of this landmark building or modernise to suit your own personal taste. Spacious, bright and sunny enjoying enviable views spanning the architectural city skyline from the spires of St Mary's Cathedral to the arch of the iconic Harbour Bridge.

- Open plan living with entertainer's kitchen
- Master bedroom with walk-in robe and en-suite
- Soaring ceilings, reverse a/c, internal laundry
- 24 hr security, video intercom access
- Optional gym and pool membership

**View**

As advertised or by appointment

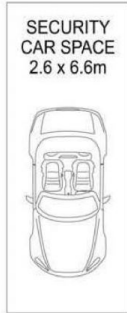
**Agent**

**Noel Jenkins**

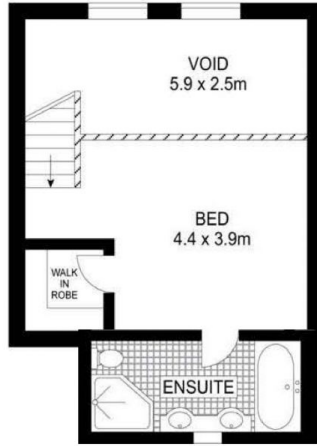
📞 0410 593 694

✉️ noel@morton.com.au

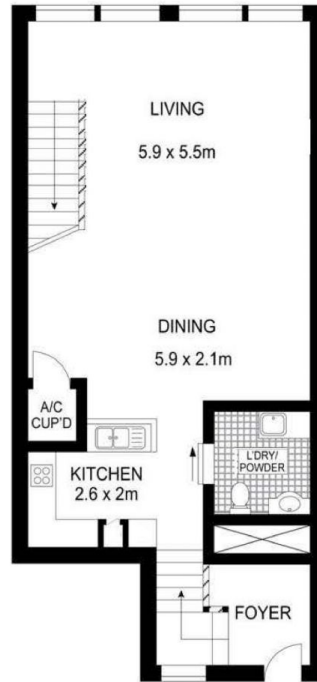
**morton.com.au**



**BASEMENT**



**UPPER LEVEL FIVE**



**ENTRY LEVEL FIVE**



SCALE (METRES)



INT : 93sqm

PLANS SHOWN ONLY INDICATIVE OF LAYOUT. DIMENSIONS ARE APPROXIMATE.

Disclaimer: Plans shown are for presentation purposes and are not part of any legal document or title and are subject to errors, omissions inaccuracies and should not be used as sole reference. All measurements are approximate. Interested parties should make their own enquires using other sources supplied.

514/6 COWPER WHARF ROADWAY

WOOLLOOMOOLOO