



**morton.**

**Rosebery** 38/6-8 Crewe Place

2 2 1

Set within the heritage wing of the sought after The Burcham' precinct, this north-facing apartment fuses industrial chic with tomorrow's innovation. The regeneration of the old Wrigley's factory is at the core of this unique development; combining old-style charm with new and improved technology. Featuring high ceilings and crafted detailing throughout, this property is an outstanding piece of architecture with a strong industrial design.

- Generous sized north-facing winter balcony
- Ducted air-conditioning, underfloor heating throughout
- European laundry and built-in study nook
- Kitchen with gas cooktop, dishwasher and ample storage
- "Burcham Energy" embedded network system
- Fingerprint access, water recycling system, solar farm
- Miele kitchen appliances & luxury finishes
- Large double bedrooms with built in wardrobes
- Chic bathrooms with floor to ceiling tiles, rainwater showerhead
- Beautiful "Durie Design" gardens, communal edible gardens

**View**

As advertised or by appointment

**Agents**

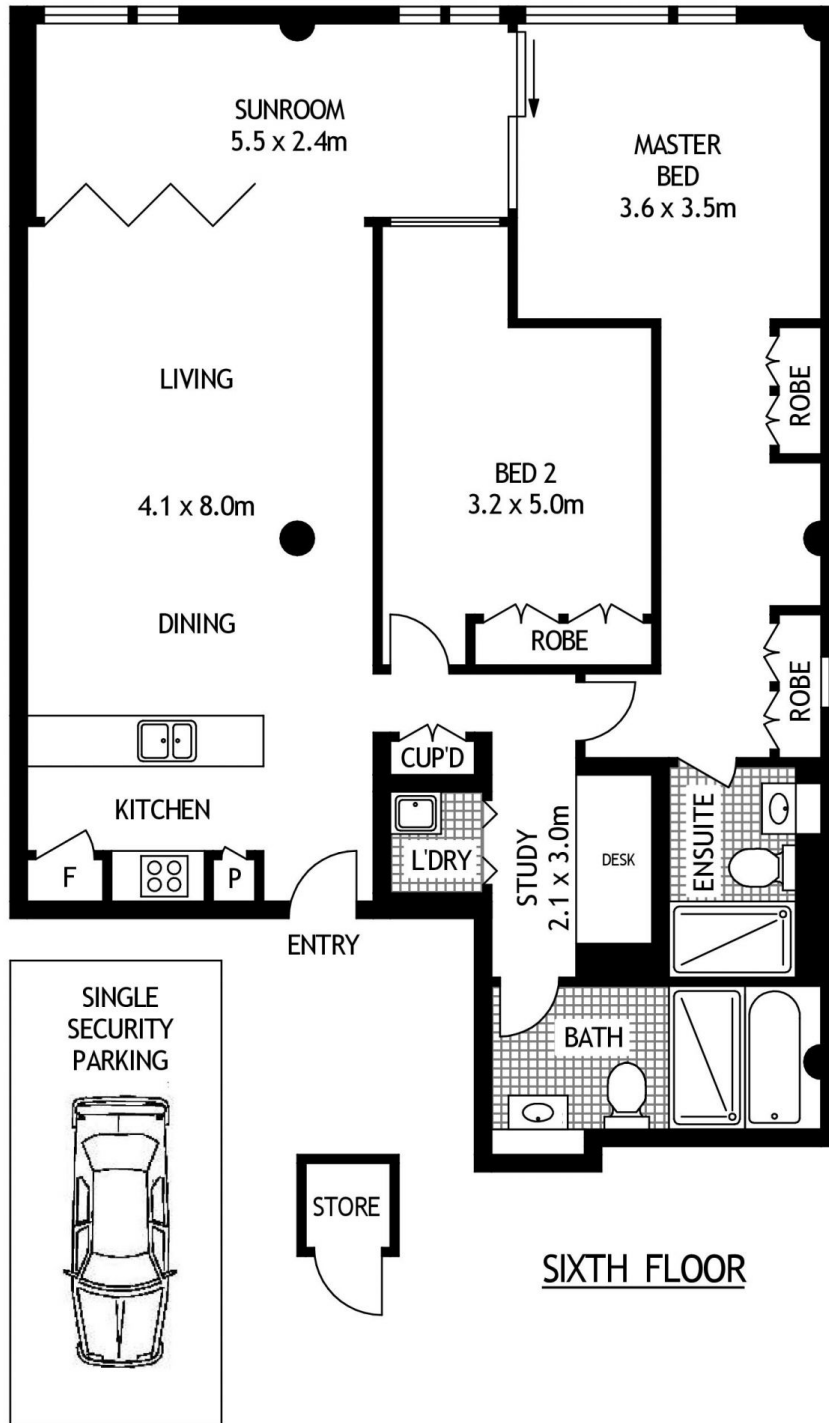
**Calvin Chan**

0406 888 028  
 calvin@morton.com.au

**Ian Qiu**

0447 696 425  
 ian@morton.com.au

**morton.com.au**



38/6-8 CREWE PLACE

ROSEBERY

SCAPE Floor Planning Disclaimer: This floor plan is conceptual only, it is provided for illustrative purposes only and should not be relied upon. We make no guarantees to the correctness of this plan. All interested parties should make and rely on their own enquiries in determining the accuracy of the information contained in this floor plan.