



morton.

Wentworth Point 306/5 Stromboli Strait

 2  2  2

Located in Corfu, this spacious, freshly painted two bedroom apartment with two tandem car spaces is just a short stroll to local cafés, shops and amenities. With Wentworth Point's exclusive Pulse Club and Baylink shuttle service at your doorstep, you'll be situated most conveniently for the ideal lifestyle of work and play.

Features:

- Combined lounge and dining room offering spacious living
- Double-sized bedrooms with built in wardrobes
- Main bedroom with en-suite
- Full size kitchen with premium kitchen appliances
- Balconies off living area and kitchen
- Internal laundry with dryer
- Two secure basement car spaces within own lockup garage
- Security access

View

As advertised or by appointment

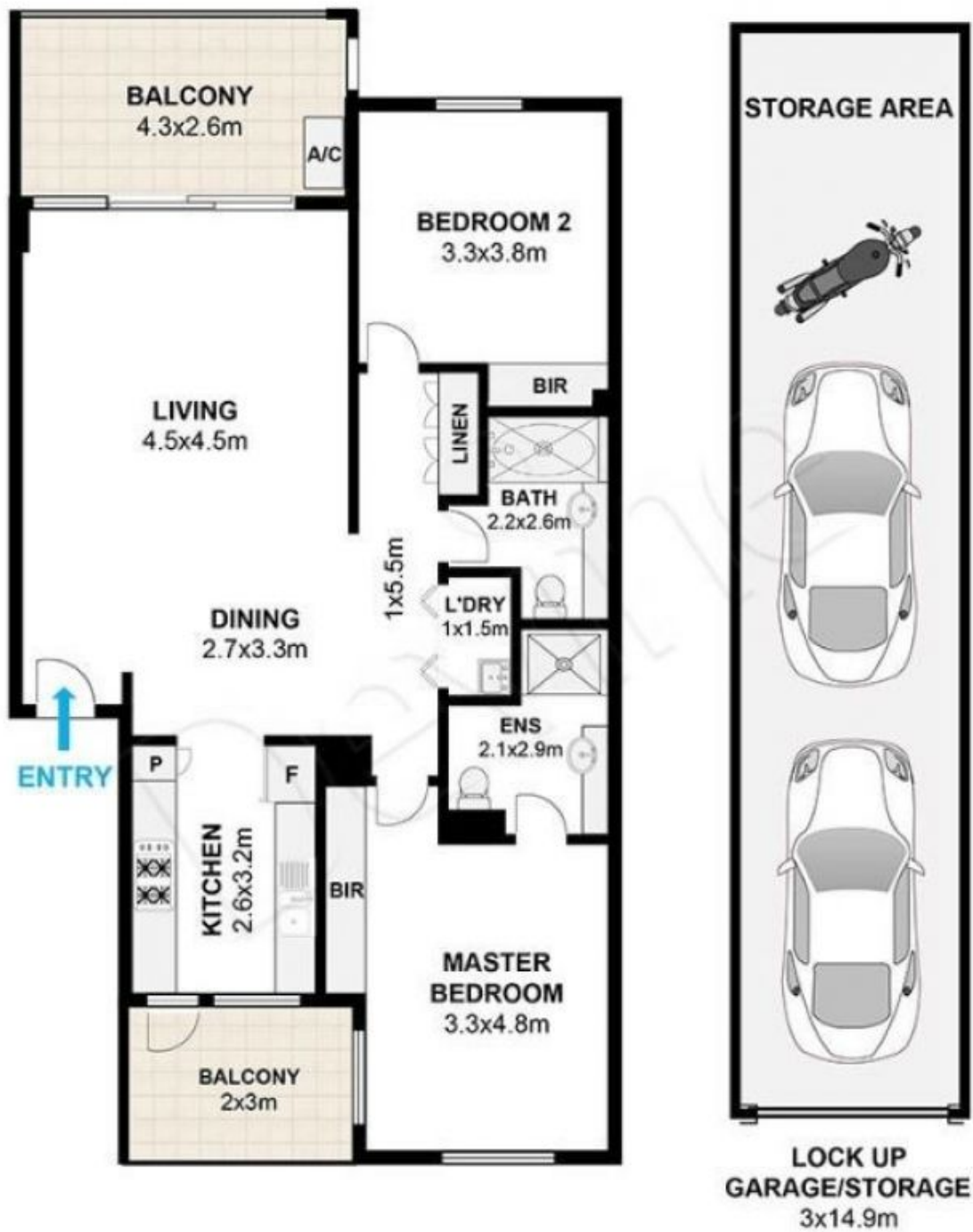
Agent

Sarah Fowell

 0437 492 129

 rentals@morton.com.au

morton.com.au



306 / 5 Stromboli Strait Wentworth Point



Floor plan by DG Life

The following floor plan is shown for presentation purposes only and is not part of any legal document. All measurements and figures are approximate.