



# morton.

**Pyrmont** 1/152-164 Bulwara Road

 2  2  1

Offering the size, privacy and exclusivity of a house, this supremely large garden residence makes a great home that's big on space and has undergone a complete quality renovation. Its flowing interiors enjoy leafy seclusion and provide an expansive single level layout, an easy low maintenance design and a quiet sense of privacy with the convenience of being located close to the city's major attractions.

- Generous open living and dining area, timber floors
- Verdant and tranquil entertainers courtyard
- Established plants, pots, pond and water features included
- Renovated kitchen, Bosch stainless gas appliances and breakfast bar
- Two double bedrooms both have access to the courtyard
- Renovated bathrooms, master with ensuite and tub
- Security car space, full internal laundry
- Full brick construction, on site management
- Resort facilities include a heated pool, gym, spa and sauna
- Access to a shared rooftop terrace with city views

### View

As advertised or by appointment

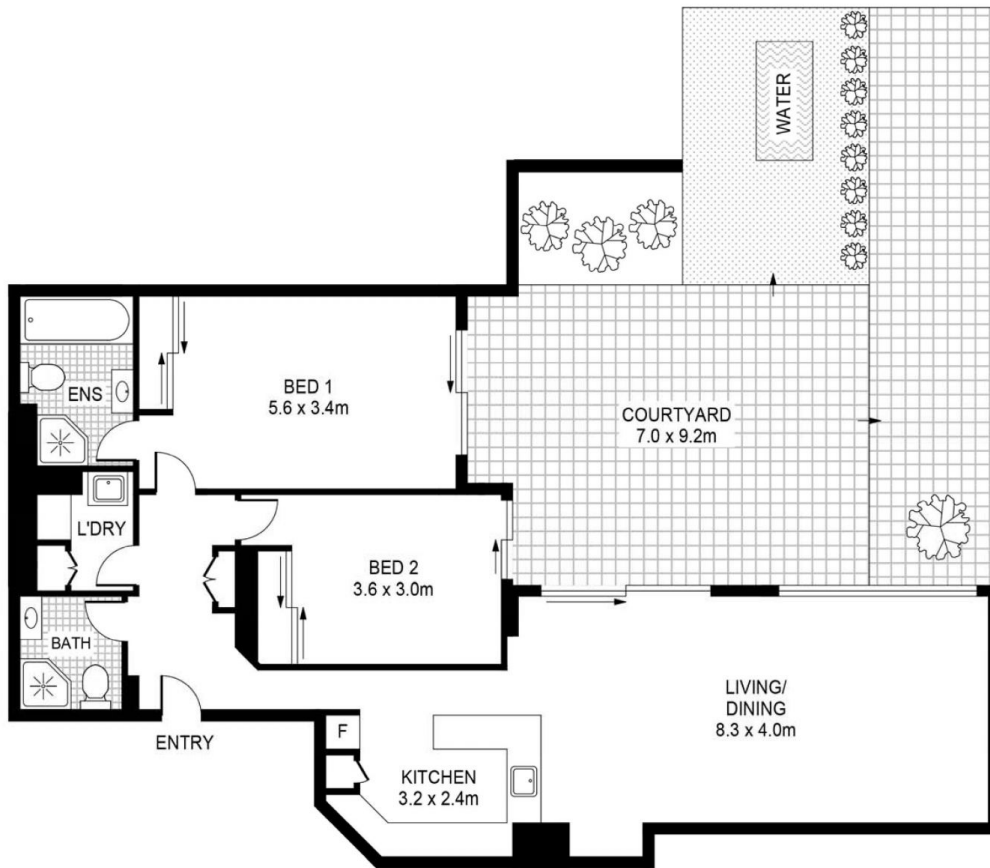
### Agent

**James Crow**

 0410 593 057

 james@morton.com.au

[morton.com.au](http://morton.com.au)



This floor plan including furniture, fixture measurements and dimensions are approximate and for illustrative purposes only.

**PYRMONT** 1/152-156 Bulwara Road

morto